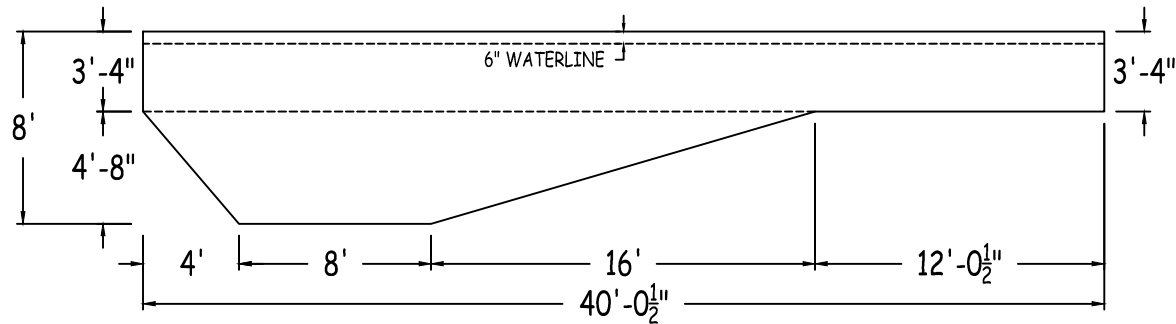
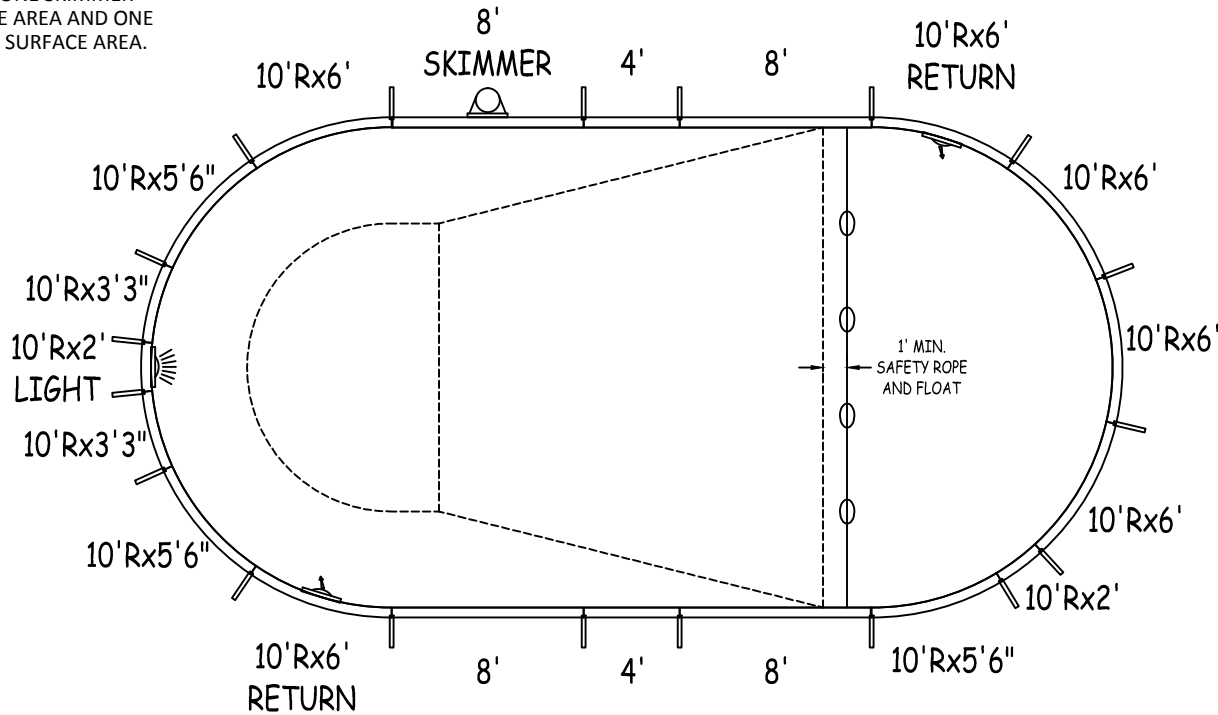
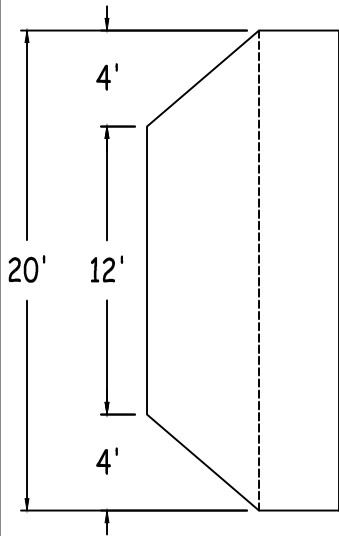


IN ACCORDANCE WITH ANSI/APSP/ICC-5 2011, THE INSTALLER IS RESPONSIBLE FOR PLACING ONE SKIMMER FOR EVERY 800 SQUARE FEET OF SURFACE AREA AND ONE RETURN FOR EVERY 300 SQUARE FEET OF SURFACE AREA.



UNIVERSAL STEEL

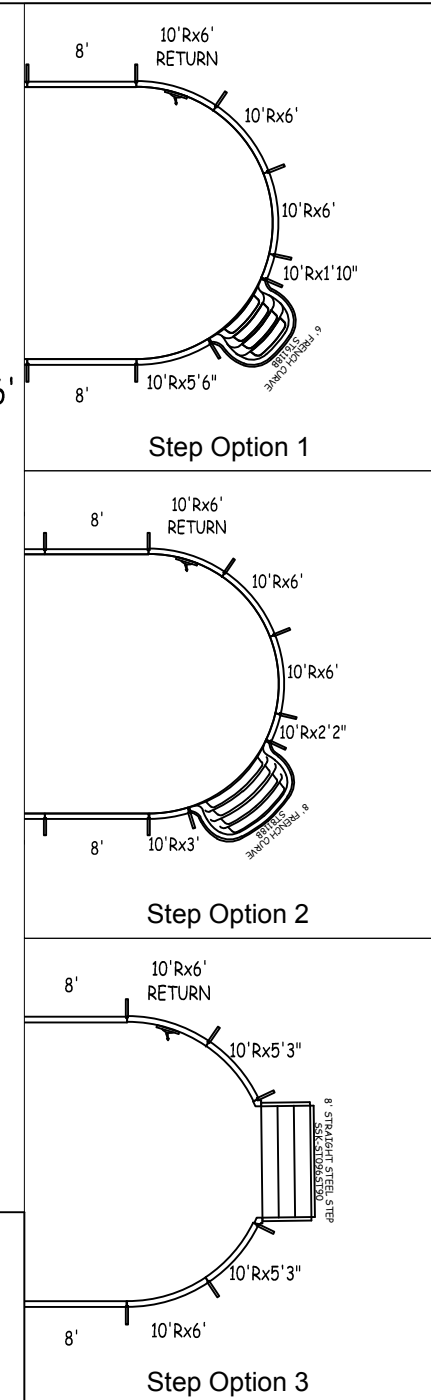
OVAL 20-0 X 40-1

42" STEEL PANELS	PERIMETER:	103'0"	VOLUME (US Gal):	23500
DWG#:	SURFACE (ft²):	715	VOLUME (Liters):	88900
USOV00S2040-13L	LINER (ft²):	801	DATE:	1/1/2013
KIT#:	COVER (ft²):	925	DSR:	76
OV00S2040	SCALE:	1/8" = 1'-0"		



DIVING/SLIDING EQUIPMENT SHALL BE DESIGNED FOR SWIMMING POOLS AND SHALL BE INSTALLED IN ACCORDANCE WITH THE DIVING/SLIDING EQUIPMENT MANUFACTURER'S SPECIFICATIONS. PLEASE CONTACT THE DIVING/SLIDING EQUIPMENT MANUFACTURER FOR THEIR SPECIFICATIONS.

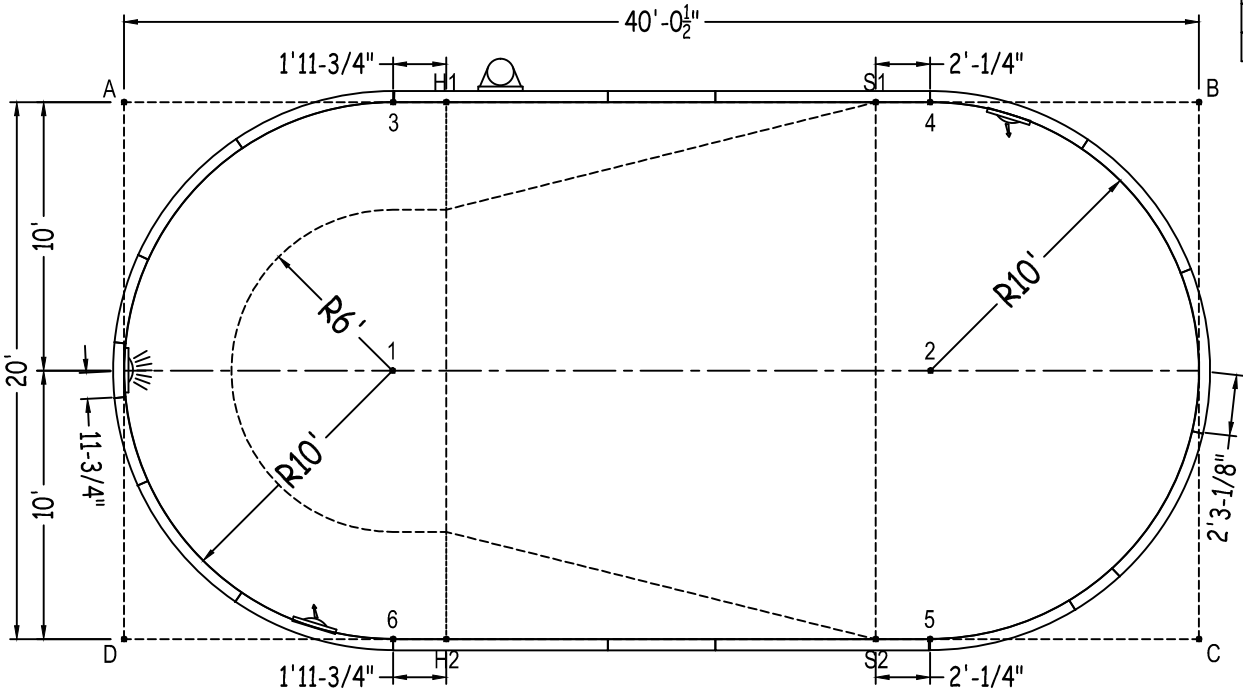
MEETS DEPTH AND SHAPE MINIMUM STANDARD ANSI/APSP/ICC-5 2011



Center To Center	
1 To 2	20'- 1/2"
Diagonals	
3 To 4	20'0"
3 To 5	28'-3 1/2"
3 To 6	20'0"
4 To 5	20'0"
4 To 6	28'-3 1/2"
5 To 6	20'0"

		Base	Option 1	Option 2	Option 3
Part number	Description	QTY	QTY	QTY	QTY
ST0960002X	8'	3	3	3	3
ST0960002*	8' SKIMMER	1	1	1	1
ST0480001X	4'	2	2	2	2
RA0721201X	10'Rx6'	4	3	3	2
RA0721201*	10'Rx6' RETURN	2	2	2	2
RA0661201X	10'Rx5'6"	3	3	2	2
RA0631201X	10'Rx5'3"	-	-	-	2
RA0391200X	10'Rx3'3"	2	2	2	2
RA0361200X	10'Rx3'	-	-	1	-
RA0261200X	10'Rx2'2"	-	-	1	-
RA0241200X	10'Rx2'	1	-	-	-
RA0241200*	10'Rx2' LIGHT	1	1	1	1
RA0221200X	10'Rx1'10"	-	1	-	-
SSC-TR096S120R	8' STEP IN 10' RAD	-	-	-	2
Brace**	Brace	19	19	19	18
IPC-STKPK25	REBAR STAKE 18" 25PC	2	2	2	2
IPC-HDWSTRT150	BOLT STR 3/8-16X1" C/W NUT 150PC	2	2	2	2
ST6118B	THKSHT STEP FRENCH CURVE 6'	-	1	-	-
ST8118B	THKSHT STEP FRENCH CURVE 8'	-	-	1	-
SSK-ST096ST90	STEEL STEP STR-90D 3 TRD 8'	-	-	-	1

** RECOMMENDED BRACE: Generic (XXX-XXX)



	A	B	C	D
1	14'-1 3/4"	31'-8"	31'-8"	14'-1 3/4"
2	31'-8"	14'-1 3/4"	14'-1 3/4"	31'-8"
3	10'- 1/4"	30'- 1/4"	36'-1"	22'-4 1/2"
4	30'- 1/4"	10'- 1/4"	22'-4 1/2"	36'-1"
5	36'-1"	22'-4 1/2"	10'- 1/4"	30'- 1/4"
6	22'-4 1/2"	36'-1"	30'- 1/4"	10'- 1/4"
S2	34'-5"	23'-4 1/4"	12'- 1/2"	28'0"
S1	28'0"	12'- 1/2"	23'-4 1/4"	34'-5"
H2	23'-4"	34'-5 1/4"	28'- 1/2"	12'0"
H1	12'0"	28'- 1/2"	34'-5 1/4"	23'-4"
A	-	40'- 1/2"	44'-9"	20'0"

QTY	PART #	DESCRIPTION
4	ST096000-1	8'-0" STRAIGHT
2	ST048000-1	4'-0" STRAIGHT
6	RA096120-1	8'-0" X 10'-0" RADIUS
2	RA096120-1	7'-6" X 10'-0" RADIUS [8' TRIMMED]
18	CLIP-1	COPING CLIP
2	COP-TSPK100	SCREW, TEK (100/BAG)
NOTE: SOME COPING PIECES MAY NEED TO BE TRIMMED TO LENGTH AS INDICATED		

