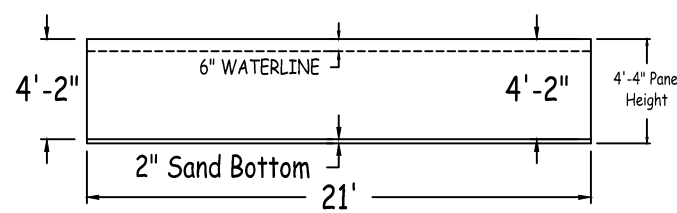
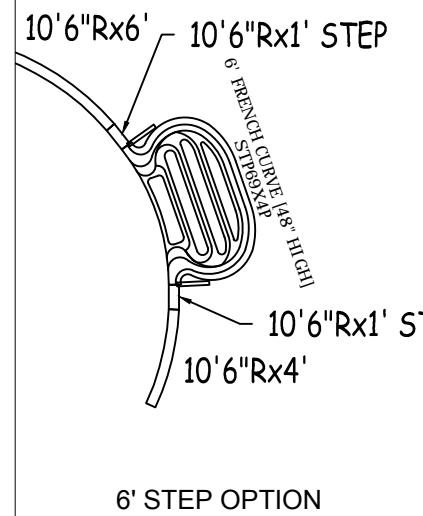
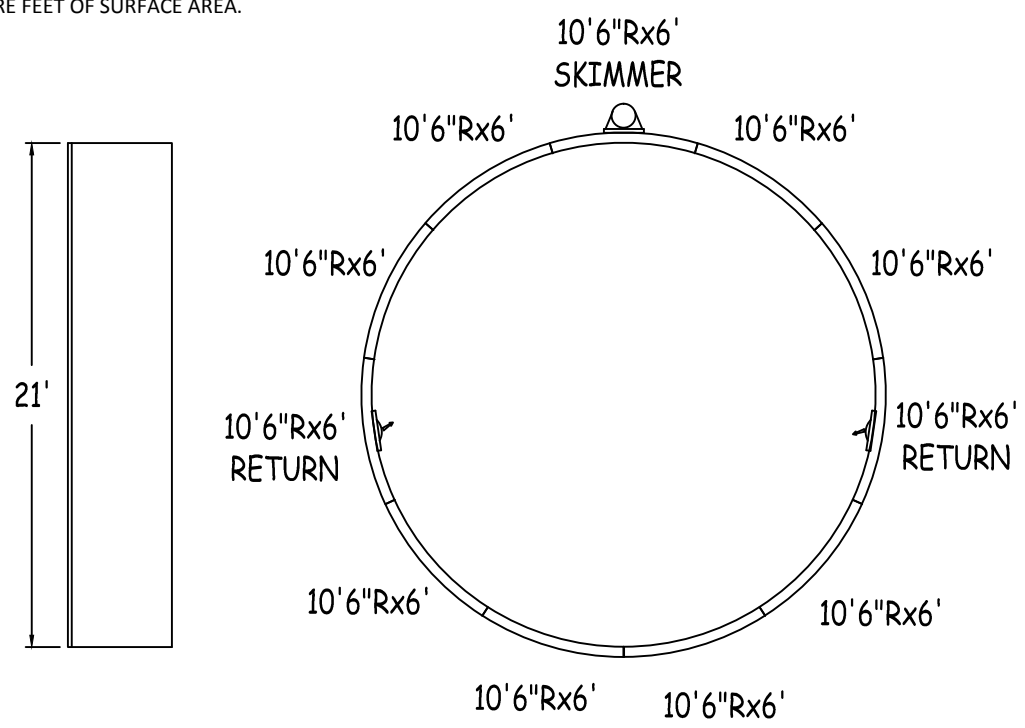


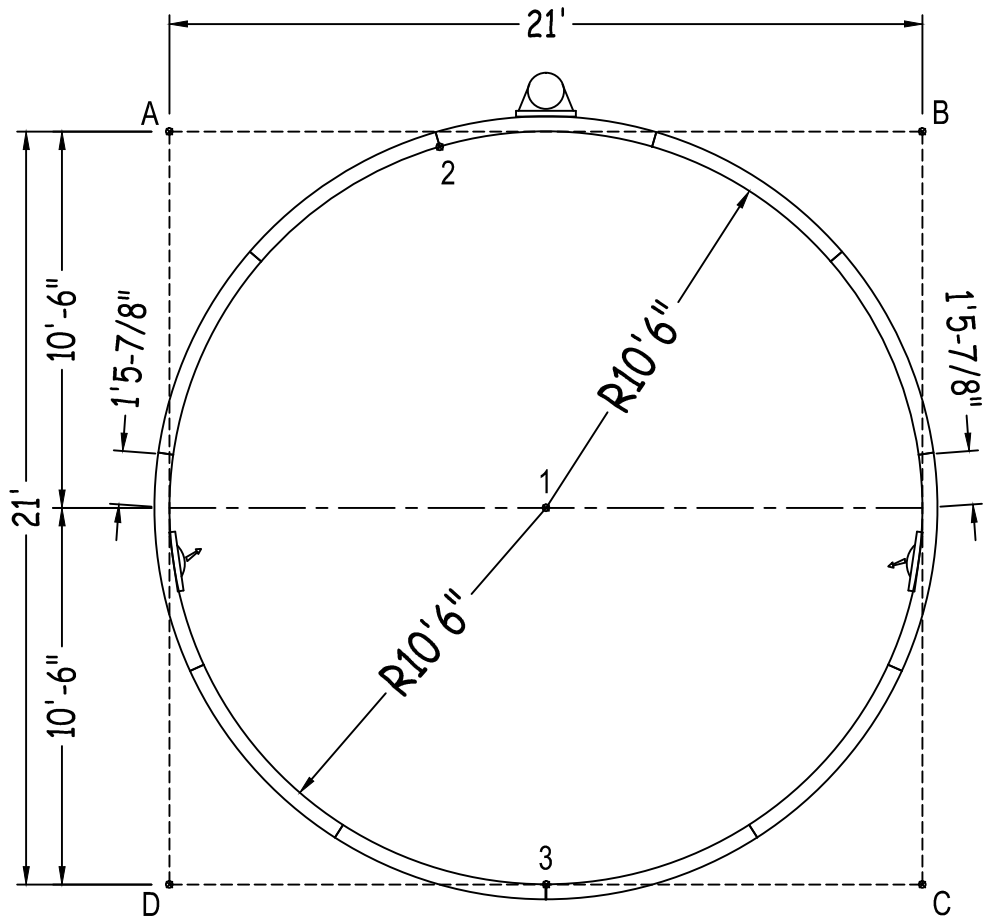
IN ACCORDANCE WITH ANSI/APSP/ICC-5 2011, THE
INSTALLER IS RESPONSIBLE FOR PLACING ONE SKIMMER
FOR EVERY 800 SQUARE FEET OF SURFACE AREA AND ONE
RETURN FOR EVERY 300 SQUARE FEET OF SURFACE AREA.



Bartop OG Pool System		ROUND 21-0 X 21-0		 NON-DIVING POOL USE OF DIVING EQUIPMENT IS PROHIBITED	WARNING! FOR WARRANTY AND SAFETY PURPOSES: <i>Compression straps required</i> (NOTE: 4 straps per panel, both sides of panel) <i>Bolts must be used at every bolt hole location.</i>
52" STEEL PANELS	PERIMETER: 66'-0"	VOLUME (US Gal): 9500			
DWG#: B5ROFBS2121-16	SURFACE (ft²): 346	VOLUME (Liters): 36000			
KIT#: ROFBS2121	LINER (ft²): 346	DATE: 1/1/2016	DSR: 151		
	COVER (ft²): 529	SCALE: 1/8" = 1'-0"		MEETS DEPTH AND SHAPE MINIMUM STANDARD ANSI/APSP/ICC-5 2011	

SHEET: 1 OF 2

Diagonals
2 To 3 20'-9 1/2"



Part number	Description	Base	Option 1
		QTY	QTY
RA0721260X	10'6"Rx6'	8	6
RA0721260*	10'6"Rx6' SKIMMER	1	1
RA0721260*	10'6"Rx6' RETURN	2	2
RA0481260X	10'6"Rx4'	-	1
RA0121260S	10'6"Rx1' STEP	-	2
RA072102SC	6'0"X4" STEP CONNECTOR	-	1
Brace	Brace	-	2
IPC-BT52WCS-2	COMPRESSION STRAP 2PC	22	26
IPC-DRVSTK12G	BRACE COMP D-STK 3"X24" 90D 12G	-	2
IPC-STKPK25	REBAR STAKE 18" 25PC	1	1
IPC-HDWSTRT150	BOLT STR 3/8-16X1" C/W NUT 150PC	1	1
STP69X4P	ACRYLIC STEP FRENCH CURVE 6' (48")	-	1
CYW-RA096126-1	BT WHT, 8' 0" X 10' 6" RADIUS 1PC	8	0
CYW-RA024126-1	BT WHT, 2' 0" X 10' 6" RADIUS 1PC	1	0
CYW-CLIP-1	BT COPING, CLIP	11	0
COP-TSPK100	SCREW PACK, TEK #10 X 3/4 (100 X1)	1	0
CYW-INSRT00PFT	BT COPING, WC TRK COVER PER FT	70	0

	A	B	C	D
1	14'-10 1/4"	14'-10 1/4"	14'-10 1/4"	14'-10 1/4"
2	7'-6 3/4"	13'-5 1/2"	24'-7"	21'-11"
3	23'-5 3/4"	23'-5 3/4"	10'-5 3/4"	10'-6 1/4"
A	-	21'-0"	29'-8 1/2"	21'-0"