

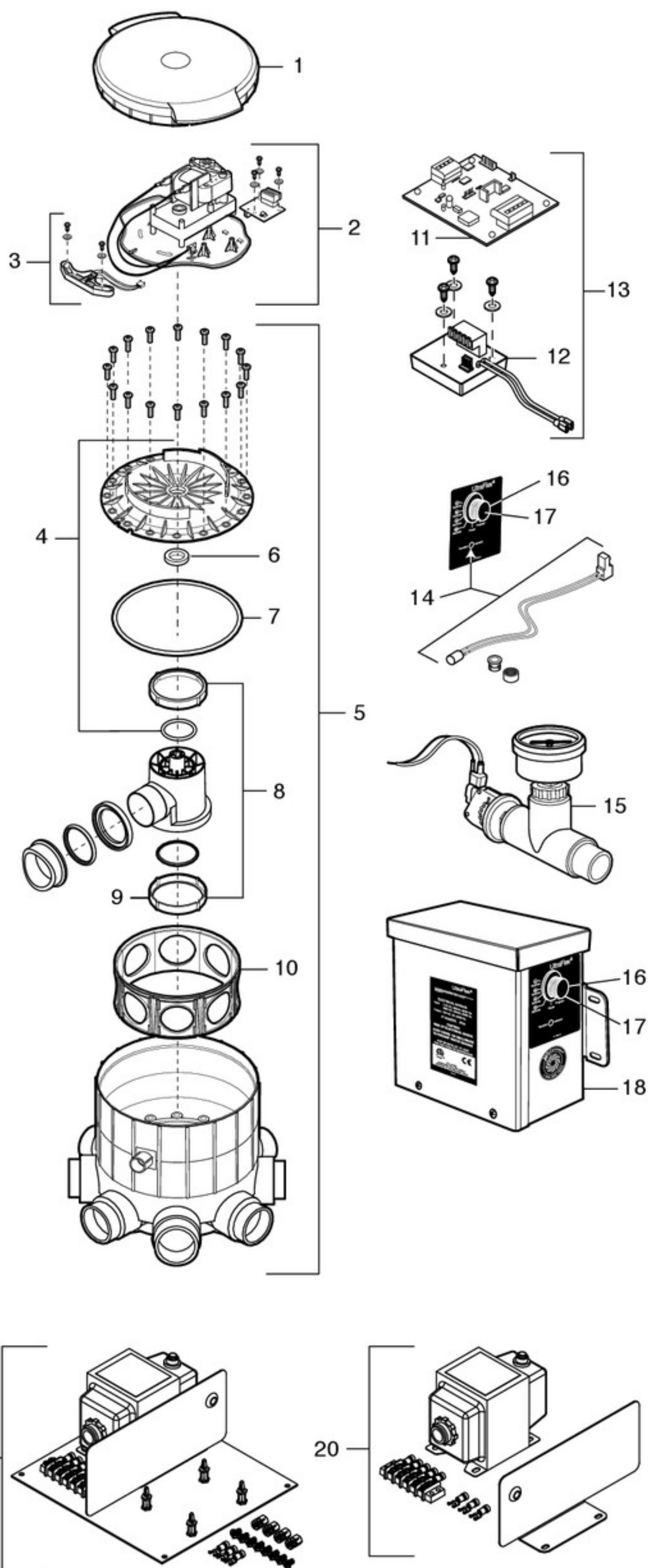
8-Port Electronic Valve Parts (UltraFlex® 2)

Key

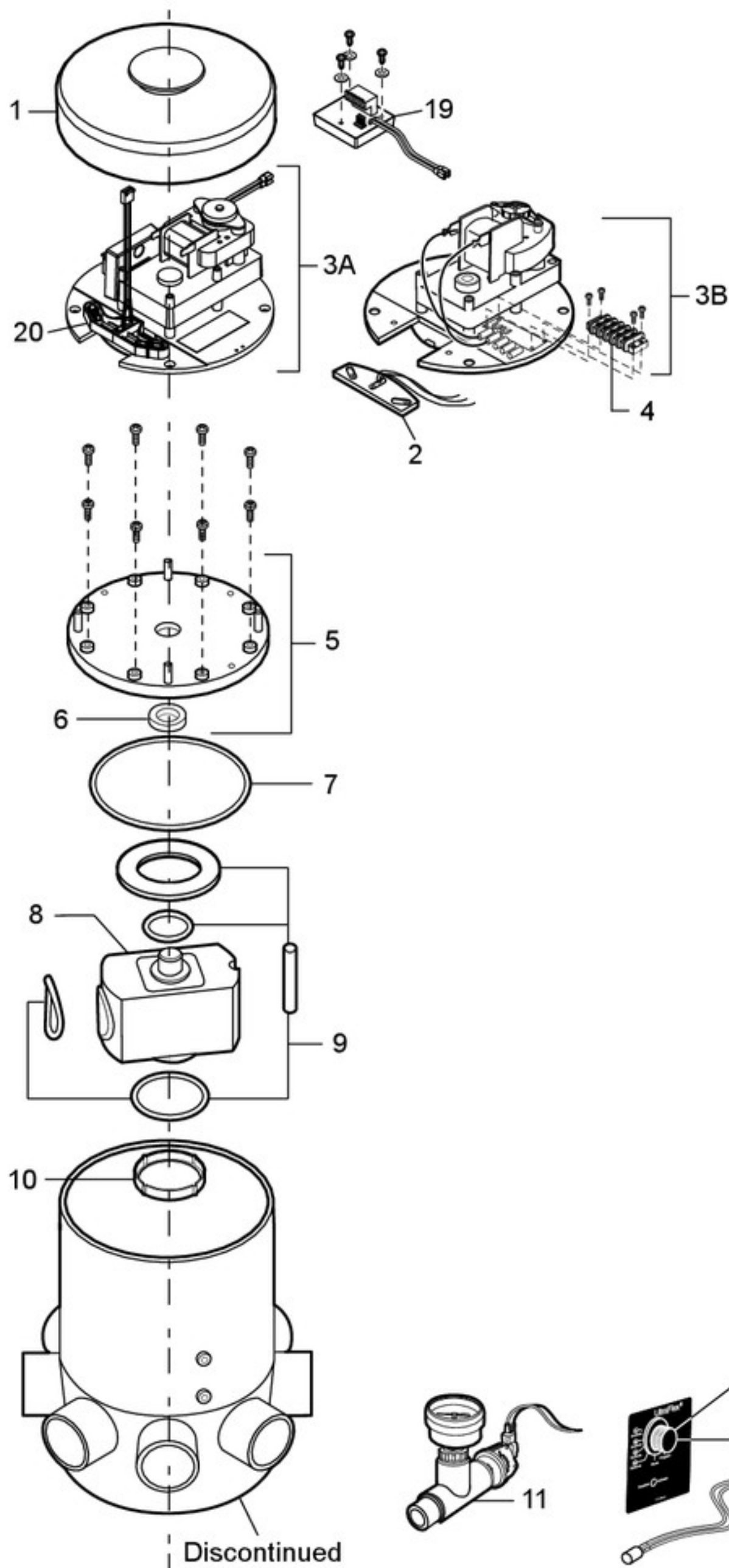
No.	Part No.	Description
1	3-7-302	Lid Assembly
2	4-7-310	Motor Mount Assembly, Start-Up Kit (includes: motor, sensor, and sensor PCB board)
3	2-7-304	Sensor Assembly - Black (use with sensor plate that has bent tabs)
	2-7-306	Sensor Assembly, Read Down Type - Gray (use with sensor plate that has square holes)
4	2-7-300	Top Plate Valve Assembly (16 1/4-20 x 3/4 screws not included)
5	4-7-300	Plumbing Kit (includes valve body, pressure switch, clean-out tee, and lid for pre-plumbing)
6	R0710000	Shaft Seal Replacement
7	1-13-21	Face Seal O-Ring
8	3-7-625	O-Ring Kit w/ Molded Tee
9	3-7-153	Inlet Wear Insert Kit, 2/PK
10	3-7-109	Molded Wall Insert Kit, 8/PK
11	3-7-720	Controller PCB (only)
12	1-7-660	Sensor PCB Board (only)
13	3-7-650	PCB Replacement Kit (kit includes sensor PCB, controller PCB, and hardware)
14	R0524200	LED Light, Mounting Clip, Ring
15	4-7-2	Pressure Switch/Gauge Assembly
16	1-9-144	Rotary Switch, 6 Position
17	1-9-163	Knob for Controller Box
18	4-7-320	Controller Kit (includes: controller and 100' of cable)
19	R0861600	Transformer Upgrade Kit UF1 and UF2 (Replaces 1-7-73 Transformer and 4-7-730 Transformer w/ Circuit Breaker)
20	R0861700	Transformer UF1 and UF2 Post Upgrade*
N/S	1-7-106	Sensor PCB Cover - Black
N/S	1-7-115	Sensor PCB Cover, Side Outlet - Gray
N/S	1-9-182	Direct Burial Cable, 250' Spool

N/S-Not shown

* R0861700 is NOT a direct replacement for 1-7-73 Transformer. It is only to be used if R0861600 Transformer Upgrade Kit has already been installed and the new transformer is failing.



8-Port Electronic Valve Parts (UltraFlex®)



Key No.	Part No.	Description
1	3-7-8	Valve Lid Replacement
2	3-7-6	Sensor Plate Assembly
3A	R0856400	UFI Motor and PCB Upgrade Kit*
3B	3-7-5	Motor Assembly
4	4-9-189	Motor/Sensor Terminal Strip
5	3-7-12	Top Plate Assembly (8 10-32 x 3/4 screws not included)
6	R0710000	Shaft Seal Replacement
7	1-13-15	O-Ring, Face Seal
8	3-7-3	Tee Assembly
9	4-7-4	O-Ring Kit (includes Wear Bar)
10	2-7-53	Inlet Wear Insert
11	4-7-2	Pressure Switch/Gauge Assembly
12	R0524200	LED Light, Mounting Clip, Ring
13	1-9-144	Rotary Switch, 6 Position
14	1-9-163	Knob for Controller Box
15	4-7-5	PCB Replacement Kit (Use R0856400 Upgrade Kit or 3-7-720 UF 2 PCB if already upgraded to R0856400)
16	4-7-202	Controller Kit (Part 4-7-320 may be used instead if R0856400 upgrade kit is in use instead of the 3-7-5 Motor Kit.)
17	R0861600	Transformer Upgrade Kit UF 1 and UF 2 (Replaces 1-9-168 Transformer)
18	R0861700	Transformer UF 1 and UF 2 Post Upgrade**
19	1-7-660	Sensor PCB Board (only)
20	2-7-306	Sensor Assembly, Read Down Type - Gray (use with sensor plate that has square holes)
N/S	4-7-305	Blower Plate Assembly
N/S	1-9-182	Direct Burial Cable, 250' Spool

N/S-Not shown

* Replaces Motor and Control PCB while upgrading to UF 2 Sensor and Communication technology. Direct replacement of 4-7-5 PCB and 3-7-5 Motor at the same time.

** R0861700 is NOT a direct replacement for 1-7-73 Transformer. It is only to be used if R0861600 Transformer Upgrade Kit has already been installed and the new transformer is failing.

