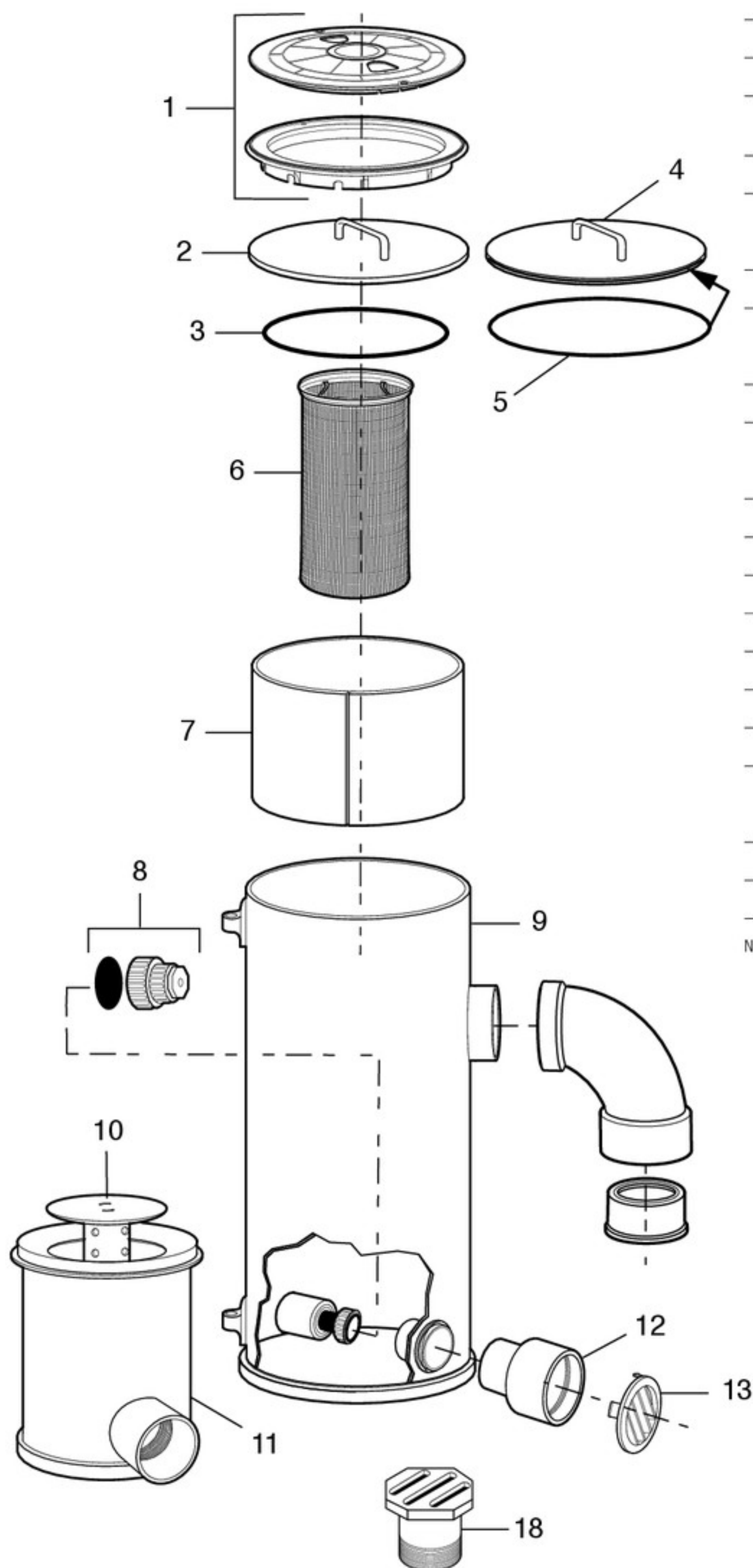
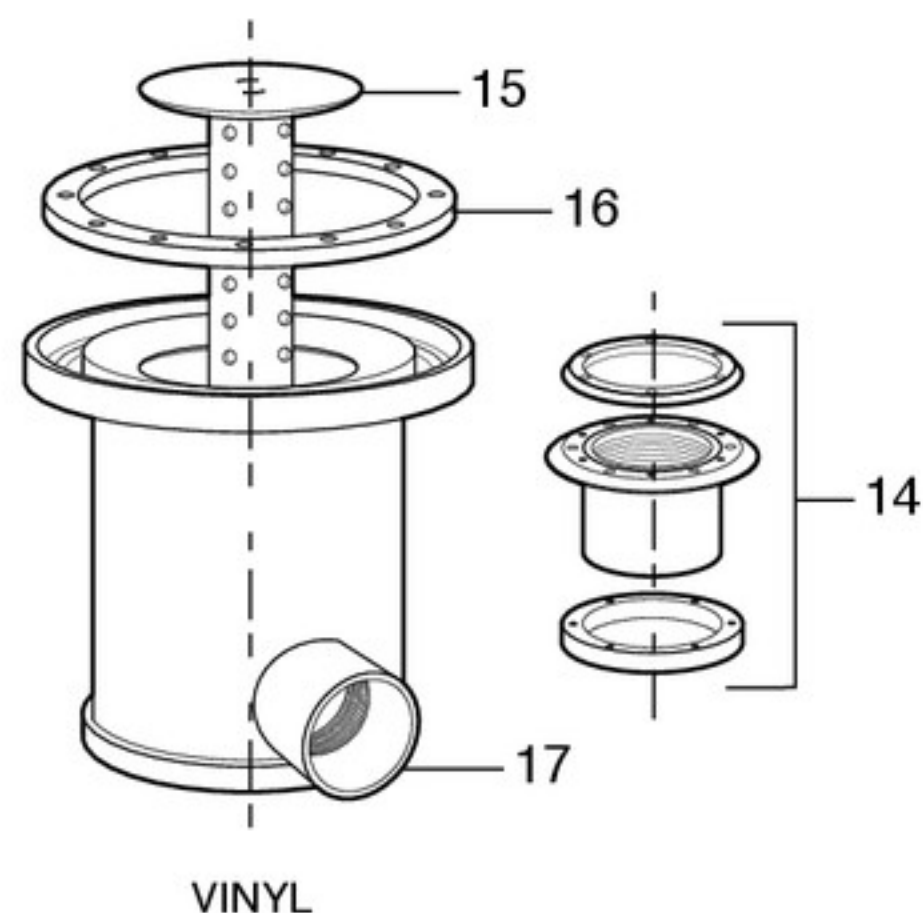


**Leaf-B-Gone™ Parts – Manufactured (Discontinued)****Key**

Key No.	Part No.	Description
1	3-3-100	Deck Lid - Tan
	3-3-101	Deck Lid - White
2	4-1-115	Acrylic Inner Lid w/ Handle (manufactured) (post-1999)
3	1-13-39	Large O-Ring, Leaf-B-Gone for use w/ Clear Inner Lid
4	4-1-116	Acrylic Inner Lid w/ Handle and O-Ring (manufactured) (pre-1999)
5	R0774800	O-Ring Leaf-B-Gone Lid (pre-1999)
6	4-4-400	Filter Bag Complete w/ PVC Ring (pre-1999)
	3-9-123	Filter Bag Complete w/ Poly Ring
7		Height Adjustment Sleeve
8	4-1-119	Venturi Nozzle Union
	4-1-219	Venturi Nozzle Union
9		Deck Canister Assembly
10	4-1-102	Floor Canister Grate and Stem (manufactured) - White
	4-1-103	Floor Canister Grate and Stem (manufactured) - Gray
11	4-1-100	Floor Canister
12	3-1-135	Grate Adapter Fitting
13	1-1-170	Concrete Wall Fitting Grate - Bright White
14	3-1-1146	Wall Fitting Assembly (vinyl)
15	4-1-102	Floor Canister Grate and Stem (manufactured) - White
16	3-1-152	Vinyl Floor Locking Ring (for manufactured LBG - 12 holes)
17	4-1-101	Floor Canister
18	3-1-141	Wall Fitting Eyeball (White)
	3-1-156	Wall Fitting Eyeball (Gray)
N/S	4-1-410	Hydrostatic Valve Assembly
N/S	3-1-410	Hydrostatic Replacement Valve

N/S-Not shown

**Leaf-B-Gone Vinyl Parts – Manufactured (Discontinued)**



# Jandy® In-Floor | DESIGN FACT SHEET

2580 S Decker Lake Blvd Suite 300,  
West Valley City, UT 84119  
Phone: 1.855.280.6465  
Fax: 801.906.6701  
Email: jandyinfloor.design@fluidra.com

**NOTICE:** The following information is required for the Design Department to complete the Jandy In-Floor Design.

**Please complete this form entirely and include a scaled drawing of the pool.**

☐ Pool Sold ☐ Bid Only  
☐ Revision to Jandy In-Floor Drawing # \_\_\_\_\_

☐ Prior Bid Drawing # \_\_\_\_\_

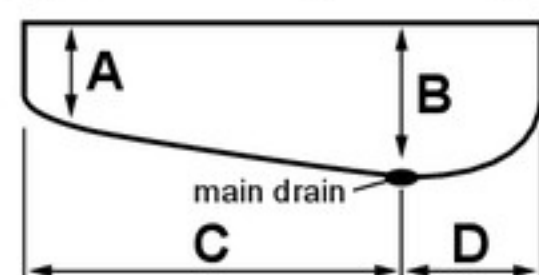
Pool Company \_\_\_\_\_ Fluidra Account # \_\_\_\_\_ Phone \_\_\_\_\_ Fax \_\_\_\_\_  
Address \_\_\_\_\_ City \_\_\_\_\_ State \_\_\_\_\_ Zip \_\_\_\_\_  
Sales Person \_\_\_\_\_ Contact Name \_\_\_\_\_ Email \_\_\_\_\_

## Warranty Information

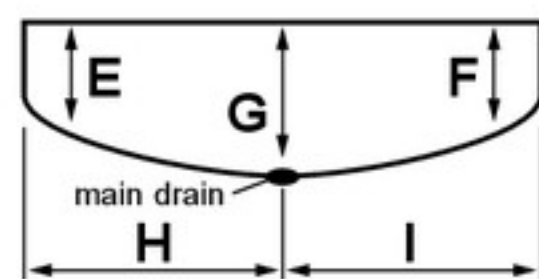
Homeowner \_\_\_\_\_ Phone \_\_\_\_\_ Your Job # \_\_\_\_\_  
Address \_\_\_\_\_ City \_\_\_\_\_ State \_\_\_\_\_ Zip \_\_\_\_\_

## Pool Drawing and Dimensions

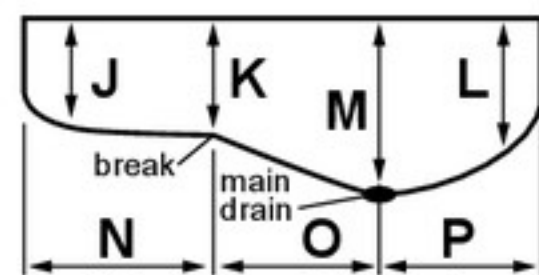
☐ Scaled Drawing Attached (Required)



☐ Shallow Pool  
A \_\_\_\_\_ ft \_\_\_\_\_ in  
B \_\_\_\_\_ ft \_\_\_\_\_ in  
C \_\_\_\_\_ ft \_\_\_\_\_ in  
D \_\_\_\_\_ ft \_\_\_\_\_ in



☐ Play Pool  
E \_\_\_\_\_ ft \_\_\_\_\_ in  
F \_\_\_\_\_ ft \_\_\_\_\_ in  
G \_\_\_\_\_ ft \_\_\_\_\_ in  
H \_\_\_\_\_ ft \_\_\_\_\_ in  
I \_\_\_\_\_ ft \_\_\_\_\_ in



☐ Deep Pool  
J \_\_\_\_\_ ft \_\_\_\_\_ in  
K \_\_\_\_\_ ft \_\_\_\_\_ in  
L \_\_\_\_\_ ft \_\_\_\_\_ in  
M \_\_\_\_\_ ft \_\_\_\_\_ in  
N \_\_\_\_\_ ft \_\_\_\_\_ in  
O \_\_\_\_\_ ft \_\_\_\_\_ in  
P \_\_\_\_\_ ft \_\_\_\_\_ in

Perimeter: \_\_\_\_\_ Surface Area: \_\_\_\_\_

☐ Length and width dimensions shown on plan (Required)

☐ Drain shown on plan (Required)

If pool has break, is it drawn on the plan? ☐ Yes ☐ N/A

Distance between pump and nearest point of suction (skimmer/main drain): \_\_\_\_\_ feet

Distance between pump and water valve: \_\_\_\_\_ feet

Distance between water valve and pool: \_\_\_\_\_ feet

## Pump and Filter

Pump Manufacturer: \_\_\_\_\_

Pump Model: \_\_\_\_\_ HP Sold: \_\_\_\_\_

Decrease pump size, if possible? ☐ Yes ☐ No

OK to use larger pump, if necessary? ☐ Yes ☐ No

Filter Manufacturer: \_\_\_\_\_

Type: ☐ Sand ☐ DE ☐ Cartridge Flow Rate: \_\_\_\_\_

## System Installation

- ☐ Pool only ☐ Spa only  
☐ Pool and spa with common pump/common in-floor system  
☐ Pool and spa with separate pump/separate in-floor system  
☐ Additional body of water\* (explain) \_\_\_\_\_

\*For example, a catch basin, trough, or play pool — any change in water level will require a separate in-floor system.

## Preferred Water Valve

☐ 5-Port ☐ 8-Port ☐ Prefer 5-Port; 8-Port OK if necessary  
☐ 6-Port (Caretaker Revolution™)

## Suction Lines

☐ Common (one) line from skimmer and main drain

☐ Separate lines from skimmer to main drain

Drain pipe size ☐ 2" ☐ 2.5" ☐ 3" ☐ 4"

Skimmer pipe size ☐ 2" ☐ 2.5" ☐ 3" ☐ 4"

## Heating

☐ Heater (requires external bypass)

☐ Solar (requires separate pump)

☐ Both heater and solar

## Chlorination

☐ Erosion (tablets, etc.) ☐ Generated Gas (ozone, etc.)

☐ Electronically Generated Salt Manufacturer: \_\_\_\_\_

## Valve Ports

☐ Design one port on the 8-port valve (if possible) as a return line to the pool for surface cleaning. This MAY increase pump size.

## Jandy® Leaf-B-Gone™

To remove larger debris that will not pass through a standard drain cover, **the Jandy In-Floor design will include a Jandy Leaf-B-Gone** on the same circulation pump (if possible) as the valve.

☐ NO JANDY LEAF-B-GONE ON THIS POOL

☐ Jandy Leaf-B-Gone on separate pump (not w/ Jandy In-Floor valve)

☐ Additional Jandy Leaf-B-Gone (for any additional body of water\*)

Skimmers should be shown on builder plan. If not, builder should locate the Jandy Leaf-B-Gone opposite a skimmer.

## Other Considerations

Design spa for continuous spillover? ☐ Yes ☐ No If yes...

GPMs desired: \_\_\_\_\_ (normal is 16 GPM) for spa overflow or any other water feature(s) that run at the same time on the same pump as the Jandy In-Floor valve.

OK to use larger pump if necessary? ☐ Yes ☐ No

Spa raised? ☐ Yes ☐ No If yes, how many inches? \_\_\_\_\_

Interior Surface: ☐ Plaster ☐ Pebble ☐ Vinyl

## Revision

Explain: \_\_\_\_\_