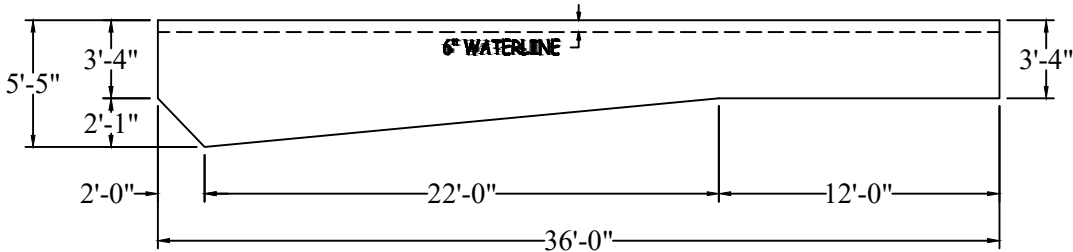
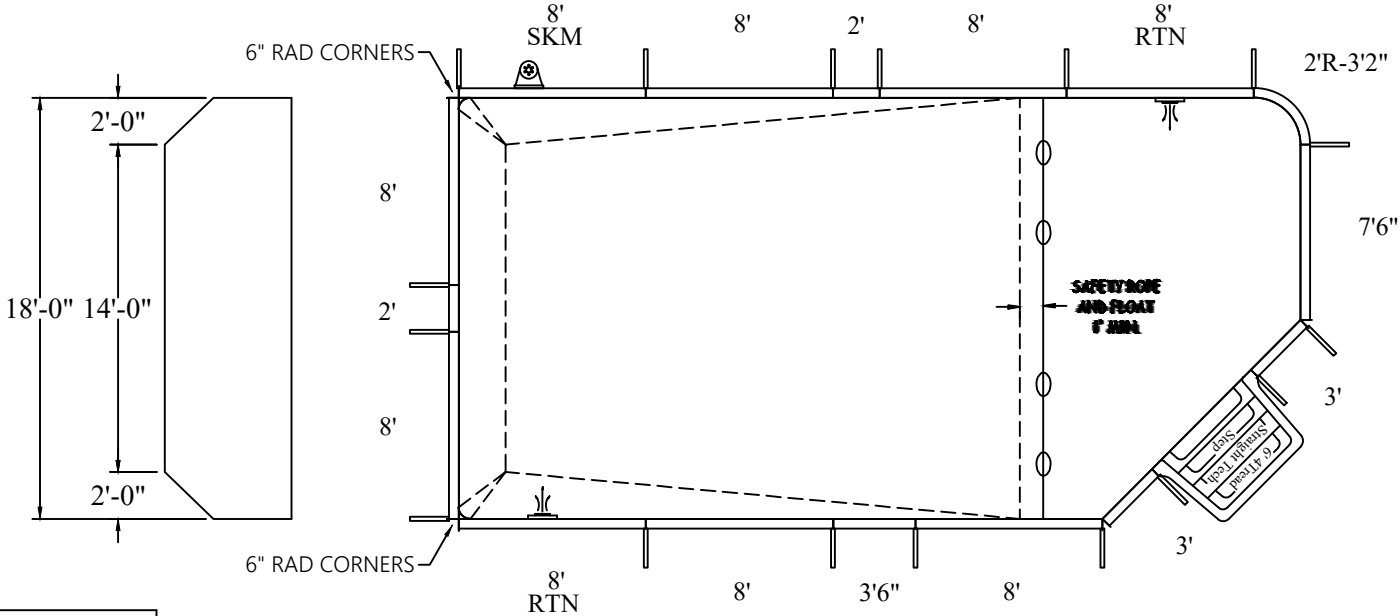


THIS DRAWING REPRESENTS THE FINISHED POOL KIT SPECIFICATIONS. POOL MUST BE DUG TO ACCOUNT FOR THE 42" STEEL WALL AND BOTTOM MATERIAL.



Radius Panel Length: 3 ft 2 in
Straight Panel Length: 93 ft 0 in

NON DIVING

ATLAS SERIES

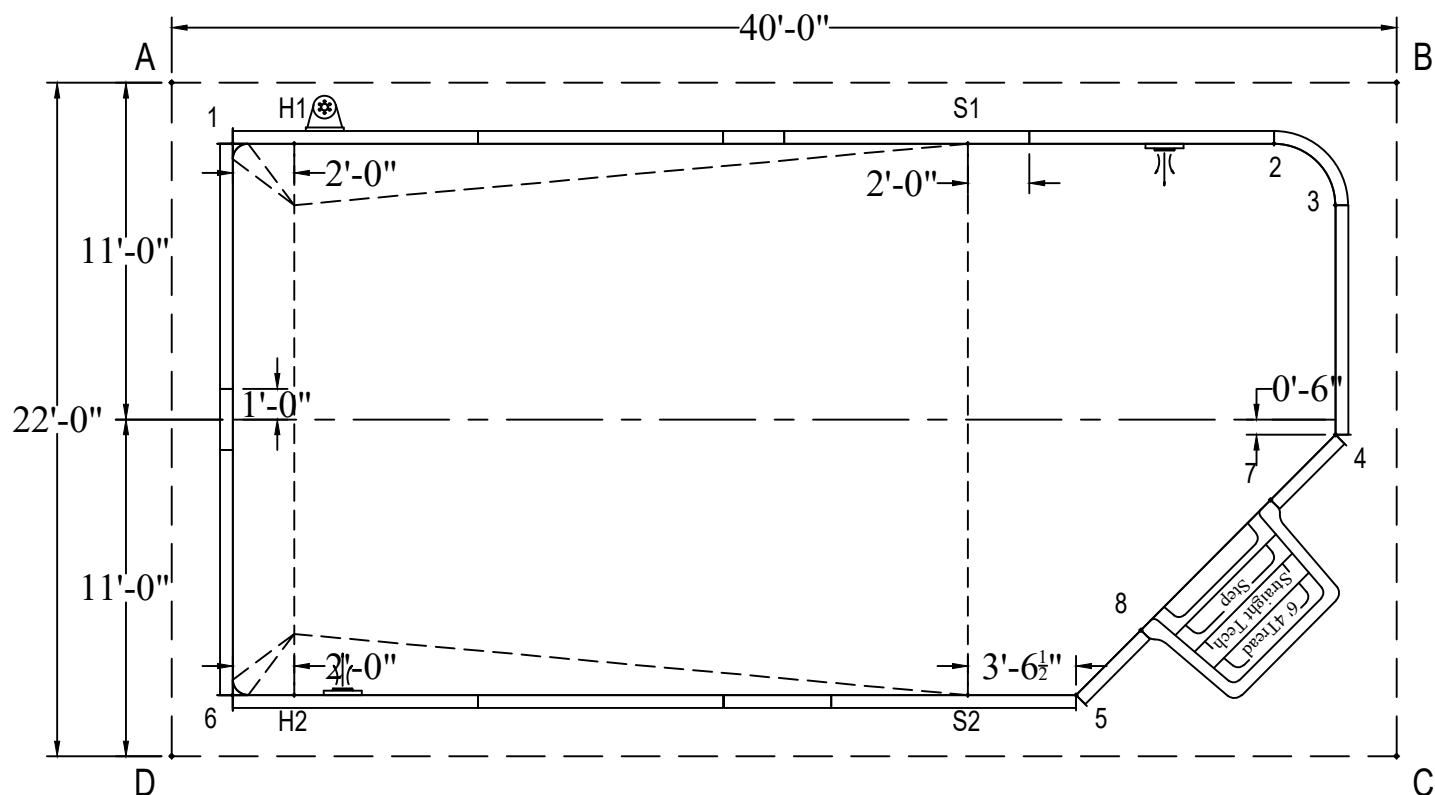
WARNING
SWIMMING POOLS ARE DANGEROUS WHEN USED IMPROPERLY. CONSULT YOUR DEALER FOR INFORMATION ON THE SAFE USE OF SWIMMING POOLS. IT IS THE RESPONSIBILITY OF TOWN OFFICIALS, BUILDERS AND HOME OWNERS TO FOLLOW ALL SAFETY RECOMMENDATIONS OF LOCAL ORDINANCES AND EQUIPMENT MANUFACTURERS. FOR DIVING & SLIDING EQUIPMENT REFER TO THE MANUFACTURE'S INSTRUCTIONS TO CORRECTLY POSITION & INSTALL EQUIPMENT.

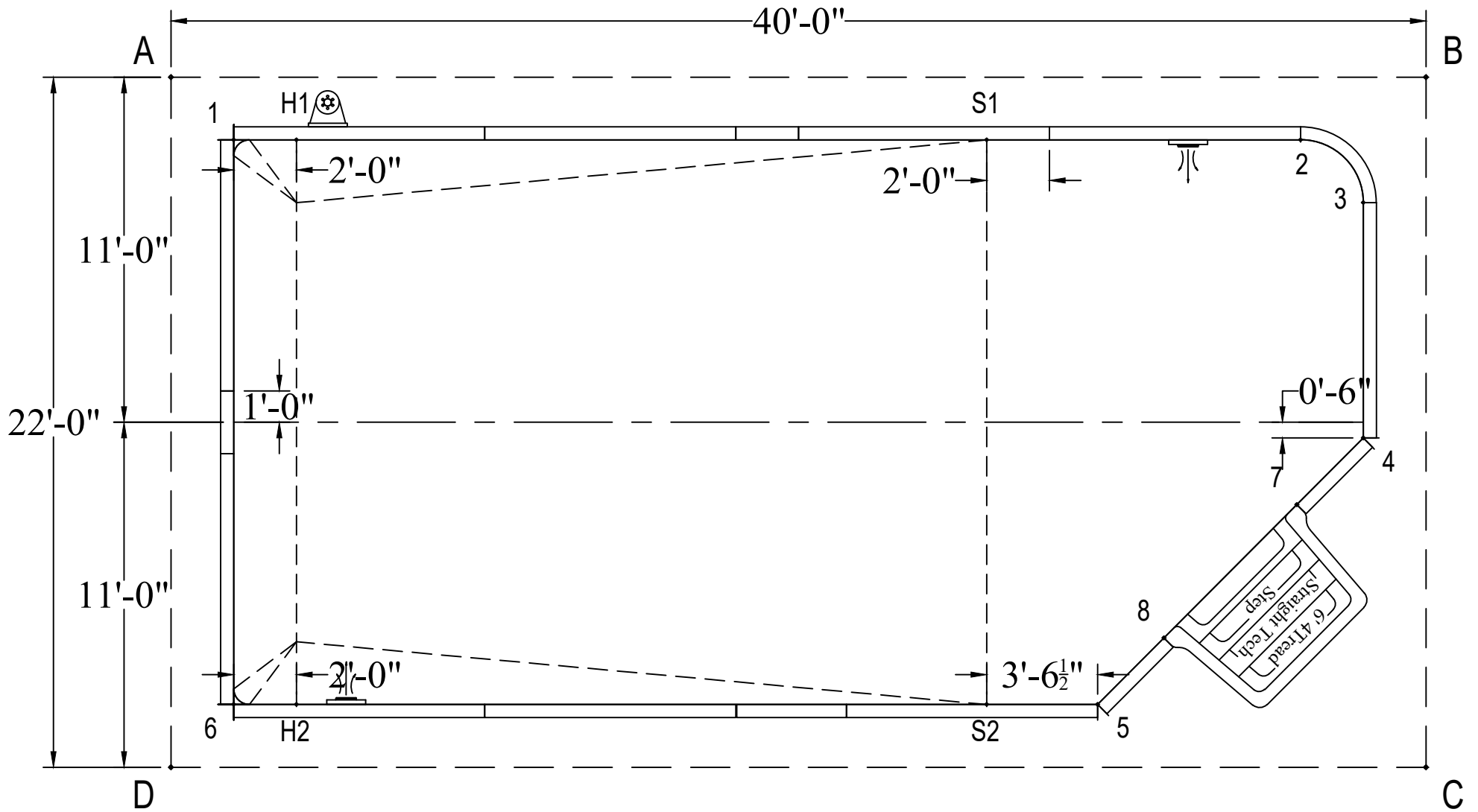
QTY	DESCRIPTION
1	STR, 8'0" 3 RIB SK-1085
2	STR, 8'0" 3 RIB RETURN
6	STR, 8'0" 3 RIB
1	STR, 7'6" 2 RIB
1	STR, 3'6" 1 RIB
2	STR, 3'0" 1 RIB
2	STR, 2'0" 0 RIB
1	3'2" X 2'0"R CN 1 RIB
17	2PC NON-ADJUSTABLE, A-FRAME
2	CORNER ANGLE BRACE, 90°
2	6" RADIUS PVC INSERT, 42" HIGH
2	CORNER ANGLE BRACE, 45°
1	HARDWARE, 45° 12 PACK
3	HARDWARE, STRAIGHT 50 PACK
2	REBAR STAKE, 18" 30 PACK
1	HARDWARE, 50 PACK-EXTRA

TITLE: 18-0 X 36-0 RECTANGLE 6IN RAD	DATE: 03/28/2023	PERIMETER: 102'-2" LIN.FT.
DWG NUMBER: ATLAS2023-0147	REVISION: ****	SURFACE (ft²): 611.1494
DEALER NAME: POOL SUPPLIES CANADA	SCALE: N.T.S.	LINER (ft²): 648.0000
TAG NAME: ****	APPROX. WATER VOLUME: 60 600 LITRES	COVER (ft²): 760.0000 Standard

	A	B	C	D
1	2'-10"	38'-0 3/4"	42'-11 1/4"	20'-1 1/4"
2	36'-0 3/4"	4'-5 3/4"	20'-4 3/4"	41'-2 1/4"
3	38'-2 1/2"	4'-5 3/4"	18'-1 1/4"	42'-0 1/2"
4	39'-8 1/2"	11'-8"	10'-8 1/4"	39'-5"
5	35'-8"	22'-7"	10'-8"	29'-7 1/4"
6	20'-1 1/4"	42'-11 1/4"	38'-0 3/4"	2'-10"
7	38'-4 1/2"	14'-2 3/4"	9'-4"	36'-10 1/4"
8	36'-4 1/4"	19'-8 3/4"	9'-3 3/4"	31'-11"
S1	26'-1"	14'-1 3/4"	24'-5"	32'-9 3/4"
S2	32'-9 3/4"	24'-5"	14'-1 3/4"	26'-1"
H1	4'-5 3/4"	36'-0 3/4"	41'-2 1/4"	20'-4 3/4"
H2	20'-4 3/4"	41'-2 1/4"	36'-0 3/4"	4'-5 3/4"
A	-	40'-0"	45'-7 3/4"	22'-0"

DIAGONALS	
1 to 2	34'-0"
1 to 3	36'-0 3/4"
1 to 4	37'-2 3/4"
1 to 5	32'-10 3/4"
1 to 6	18'-0"
1 to 7	35'-9 3/4"
1 to 8	33'-7 1/2"
2 to 3	2'-10"
2 to 4	9'-8 1/2"
2 to 5	19'-1 1/2"
2 to 6	38'-5 3/4"
2 to 7	11'-7 1/2"
2 to 8	16'-5 1/2"
3 to 4	7'-6"
3 to 5	18'-1 1/4"
3 to 6	39'-4 3/4"
3 to 7	9'-10 1/4"
3 to 8	15'-3"
4 to 5	12'-0"
4 to 6	37'-0"
4 to 7	3'-0"
4 to 8	9'-0"
5 to 6	27'-6 1/2"
5 to 7	9'-0"
5 to 8	3'-0"
6 to 7	34'-5 3/4"
6 to 8	29'-8 3/4"
7 to 8	6'-0"
S1 to S2	18'-0"
S1 to H1	22'-0"
S1 to H2	28'-5"
S2 to H1	28'-5"
S2 to H2	22'-0"
H1 to H2	18'-0"





DWG NUMBER: ATLAS2023-0147	TITLE: 18-0 X 36-0 RECTANGLE 6IN RAD	TAG NAME: ****	ATLAS SERIES
	DEALER NAME: POOL SUPPLIES CANADA	DATE: 03/28/2023	