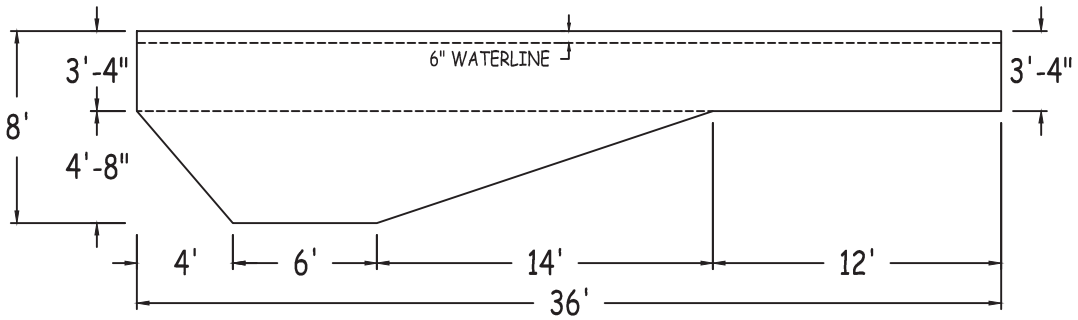
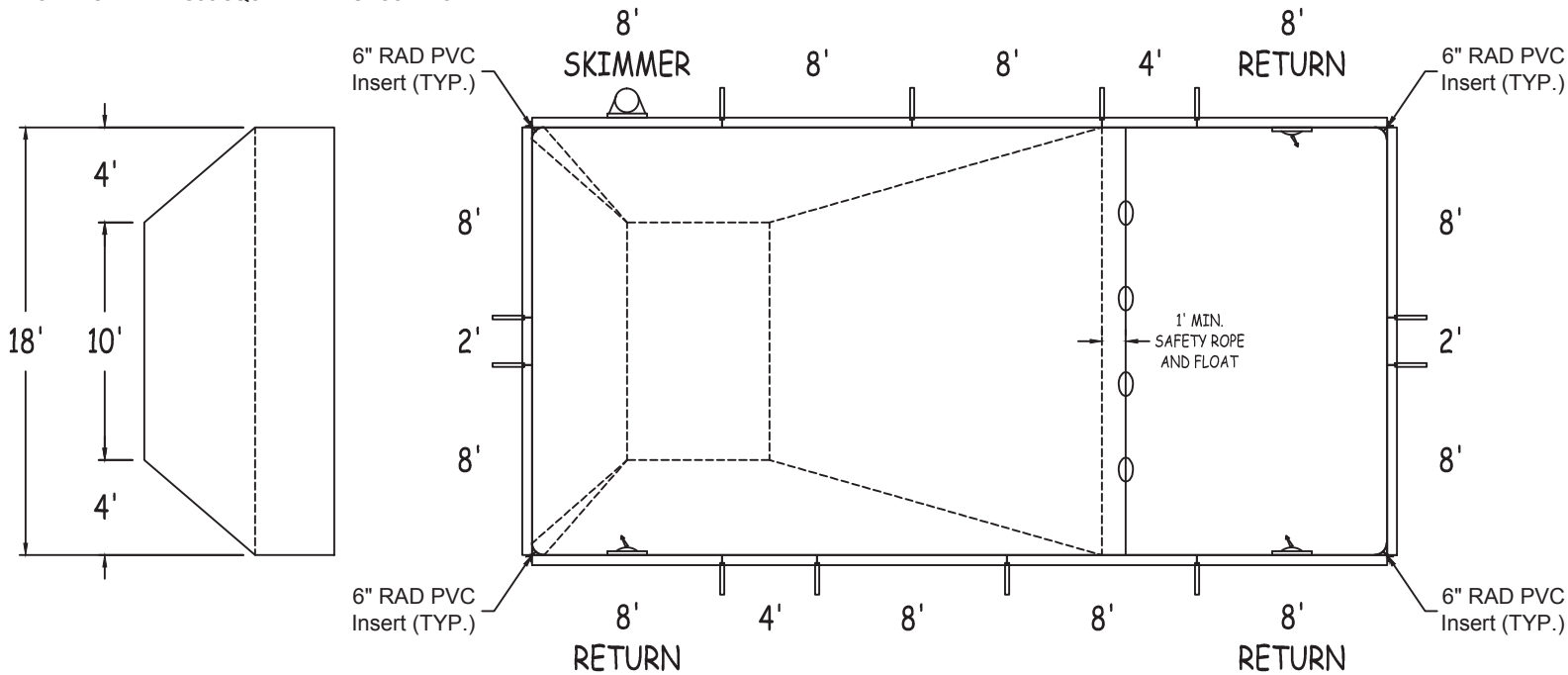


IN ACCORDANCE WITH ANSI/APSP/ICC-5 2011, THE INSTALLER IS RESPONSIBLE FOR PLACING ONE SKIMMER FOR EVERY 800 SQUARE FEET OF SURFACE AREA AND ONE RETURN FOR EVERY 300 SQUARE FEET OF SURFACE AREA.



LATHAM STEEL

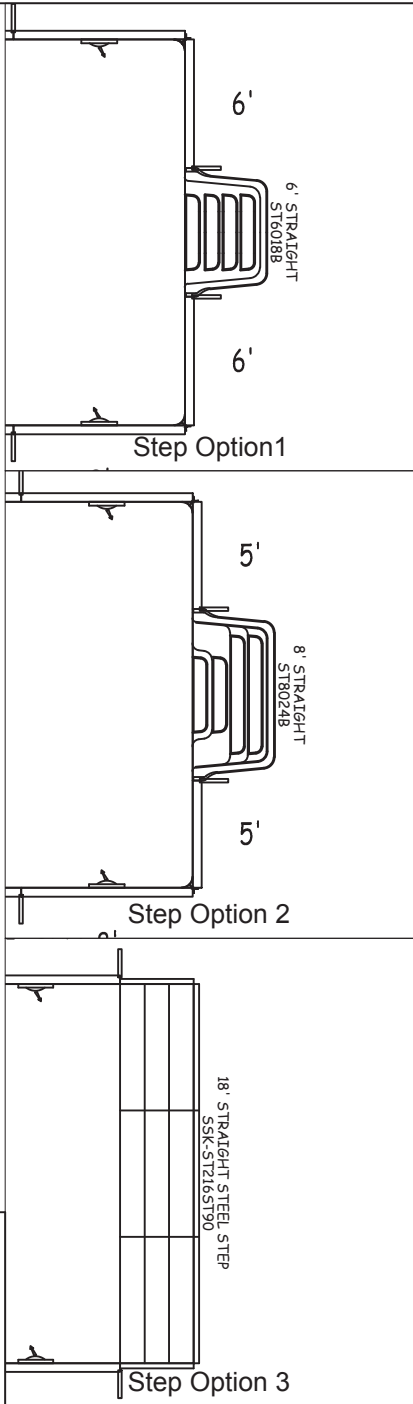
RECTANGLE-6IN RAD 18-0 X 36-0

42" STEEL PANELS	PERIMETER:	108'-0"	VOLUME (US Gal):	21300
DWG#:	SURFACE (ft²):	648	VOLUME (Liters):	80600
LSRE06S1836-15	LINER (ft²):	648	DATE:	1/1/2015
KIT#:	COVER (ft²):	760	DSR:	111
RE06S1836	SCALE:	1/8" = 1'-0"		



DIVING/SLIDING EQUIPMENT SHALL BE DESIGNED FOR SWIMMING POOLS AND SHALL BE INSTALLED IN ACCORDANCE WITH THE DIVING/SLIDING EQUIPMENT MANUFACTURER'S SPECIFICATIONS. PLEASE CONTACT THE DIVING/SLIDING EQUIPMENT MANUFACTURER FOR THEIR SPECIFICATIONS.

MEETS DEPTH AND SHAPE MINIMUM STANDARD ANSI/APSP/ICC-5 2011

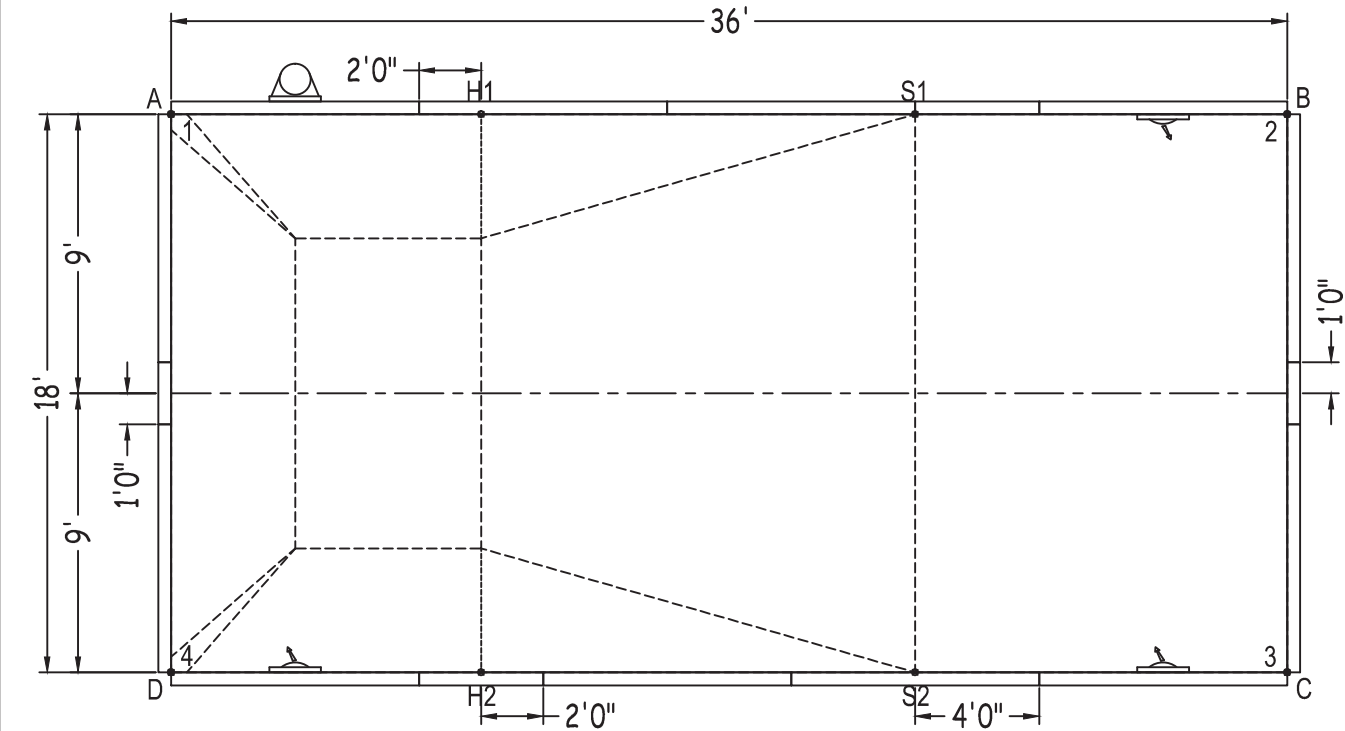


RECTANGLE-6IN RAD

SHEET: 1 OF 2

Diagonals	
S1toS2	18'-0"
H1toH2	18'-0"
S1toH1	14'-0"
S2toH2	14'-0"
S1toH2	22'-9 3/4"
H1toS2	22'-9 3/4"
1 to 2	36'-0"
1 to 3	40'-3"
1 to 4	18'-0"
2 to 3	18'-0"
2 to 4	40'-3"
3 to 4	36'-0"

Part number	Description	Base	Option 1	Option 2	Option 3
		QTY	QTY	QTY	QTY
ST0960002X	8'	8	6	6	4
ST0960002*	8' SKIMMER	1	1	1	1
ST0960002*	8' RETURN	3	3	3	3
ST0720001X	6'	-	2	-	-
ST0600001X	5'	-	-	2	-
ST0540001X	4'6"	-	-	-	2
ST0480001X	4'	2	2	2	2
ST0240000X	2'	2	1	1	1
Brace	Brace	12	12	12	12
IPC-AB90	CONNECTOR CNR ANGLE 90D 42"	4	4	4	2
IPC-AB90-INS6R	CORNER INSERT 6" RAD PVC 42"	4	4	4	2
IPC-STKPK25	REBAR STAKE 18" 25PC	2	2	2	2
IPC-HDWSTRT150	BOLT STR 3/8-16X1" C/W NUT 150PC	2	2	2	2
ST6018B	THKSHT STEP STR 6'	-	1	-	-
ST8024B	THKSHT STEP STR SIT N STEP 8'	-	-	1	-
SSK-ST216ST90	FE STEEL STEP STR-90D 3 TRD 18'	-	-	-	1



	A	B	C	D
1	0"	36'-0"	40'-3"	18'-0"
2	36'-0"	0"	18'-0"	40'-3"
3	40'-3"	18'-0"	0"	36'-0"
4	18'-0"	40'-3"	36'-0"	0"
S2	30'-0"	21'-7 1/2"	12'-0"	24'-0"
S1	24'-0"	12'-0"	21'-7 1/2"	30'-0"
H2	20'-7"	31'-7 1/2"	26'-0"	10'-0"
H1	10'-0"	26'-0"	31'-7 1/2"	20'-7"
A	-	36'-0"	40'-3"	18'-0"