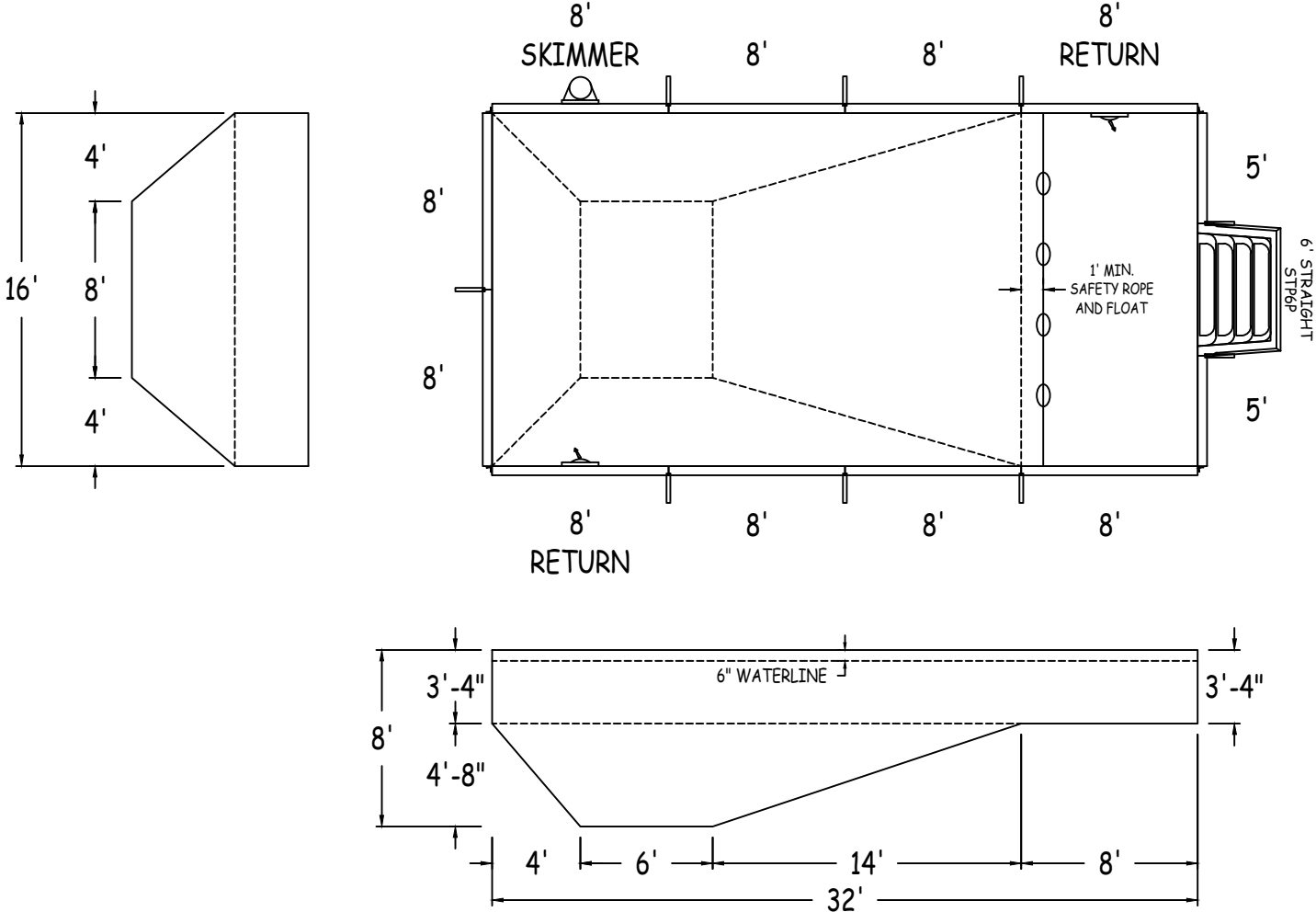


IN ACCORDANCE WITH ANSI/APSP/ICC-5 2011, THE INSTALLER IS RESPONSIBLE FOR PLACING ONE SKIMMER FOR EVERY 800 SQUARE FEET OF SURFACE AREA AND ONE RETURN FOR EVERY 300 SQUARE FEET OF SURFACE AREA.



Radius Panel Length: 0 FT 0 IN
Straight Panel Length: 90 FT 0 IN

LATHAM STEEL	RECTANGLE 90DEG 16-0 x 32-0			
42" STEEL PANELS	PERIMETER:	96'-0"	VOLUME (US Gal):	16800
DWG#:	SURFACE (ft²):	512	VOLUME (Liters):	63600
2026-SPL-01489	LINER (ft²):	512	DATE: 1/14/2026	DSR:
KIT#:	COVER (ft²):	612	SCALE: 1/8" = 1'-0"	



DIVING/SLIDING EQUIPMENT SHALL BE DESIGNED FOR SWIMMING POOLS AND SHALL BE INSTALLED IN ACCORDANCE WITH THE DIVING/SLIDING EQUIPMENT MANUFACTURER'S SPECIFICATIONS. PLEASE CONTACT THE DIVING/SLIDING EQUIPMENT MANUFACTURER FOR THEIR SPECIFICATIONS.

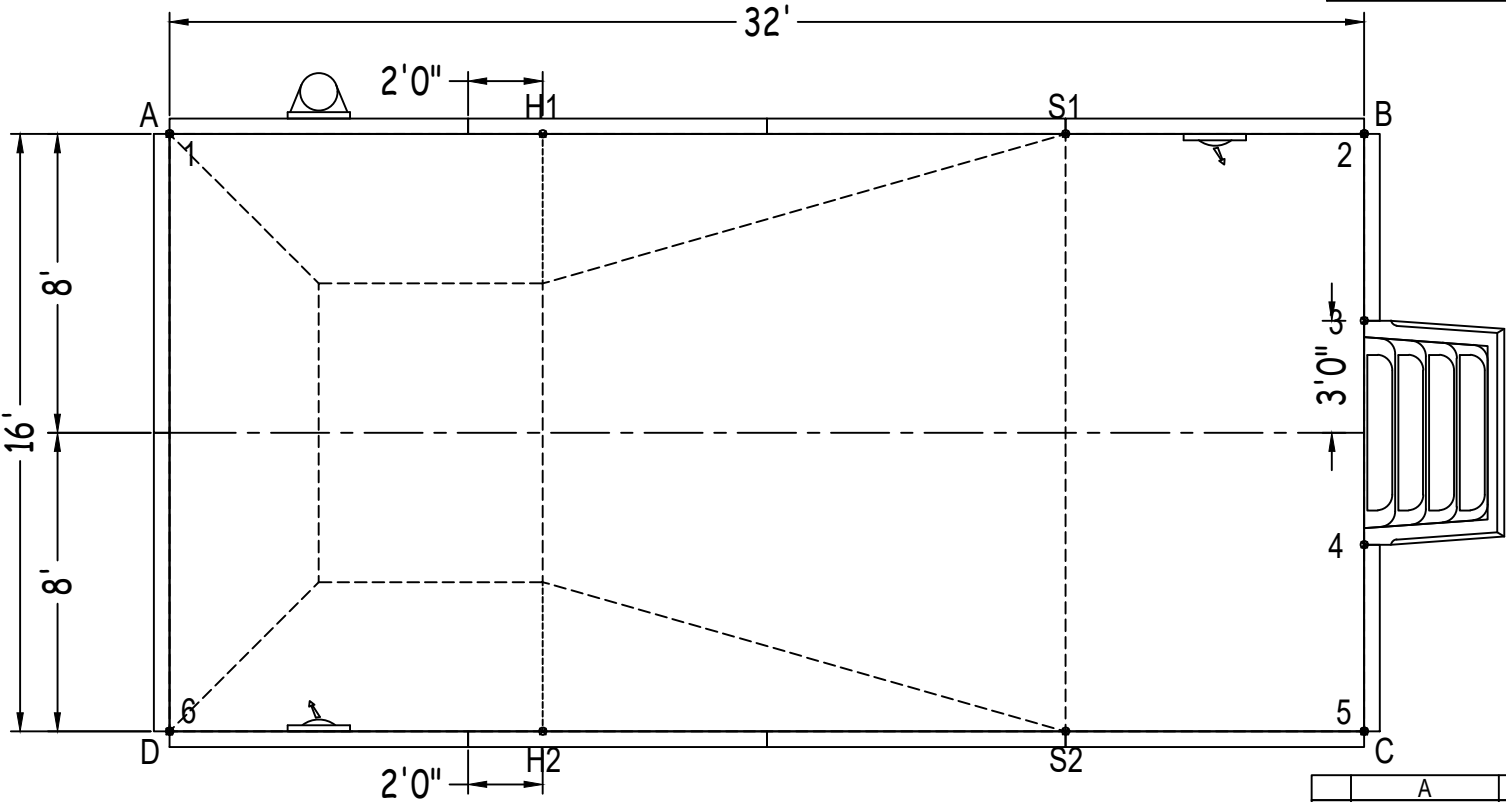
CUSTOMER:
JOB NAME:

ALL ASPECTS OF THIS DRAWING COMPLIES WITH ANSI/APSP/ICC-5 2011 AND ISPC EDITIONS 2018, 2021, & 2024

RECTANGLE

Diagonals		
S1 to S2	16'-0"	2 to 3 5'-0"
H1 to H2	16'-0"	2 to 4 11'-0"
S1 to H1	14'-0"	2 to 5 16'-0"
S2 to H2	14'-0"	2 to 6 35'-9 1/4"
S1 to H2	21'-3"	3 to 4 6'-0"
H1 to S2	21'-3"	3 to 5 11'-0"
1 to 2	32'-0"	3 to 6 33'-10"
1 to 3	32'-4 3/4"	4 to 5 5'-0"
1 to 4	33'-10"	4 to 6 32'-4 3/4"
1 to 5	35'-9 1/4"	5 to 6 32'-0"
1 to 6	16'-0"	

		Base
Part number	Description	QTY
ST0960002X	8'	7
ST0960002*	8' SKIMMER	1
ST0960002*	8' RETURN	2
ST0600001X	5'	2
Brace	Brace	9
IPC-AB90	CONNECTOR CNR ANGLE 90D 42"	4
IPC-STKPK25	REBAR STAKE 18" 25PC	1
IPC-HDWSTRT150	BOLT STR 3/8-16X1" C/W NUT 150PC	1
STP6P	ACRYLIC STEP STRAIGHT 6'	1



	A	B	C	D
1	0"	32'-0"	35'-9 1/4"	16'-0"
2	32'-0"	0"	16'-0"	35'-9 1/4"
3	32'-4 3/4"	5'-0"	11'-0"	33'-10"
4	33'-10"	11'-0"	5'-0"	32'-4 3/4"
5	35'-9 1/4"	16'-0"	0"	32'-0"
6	16'-0"	35'-9 1/4"	32'-0"	0"
S2	28'-10 1/4"	17'-10 3/4"	8'-0"	24'-0"
S1	24'-0"	8'-0"	17'-10 3/4"	28'-10 1/4"
H2	18'-10 1/2"	27'-2 1/2"	22'-0"	10'-0"
H1	10'-0"	22'-0"	27'-2 1/2"	18'-10 1/2"
A	-	32'-0"	35'-9 1/4"	16'-0"