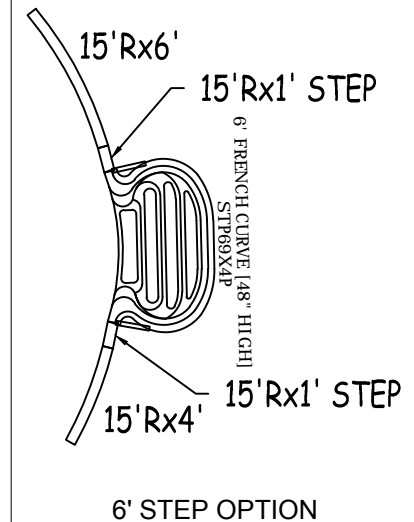
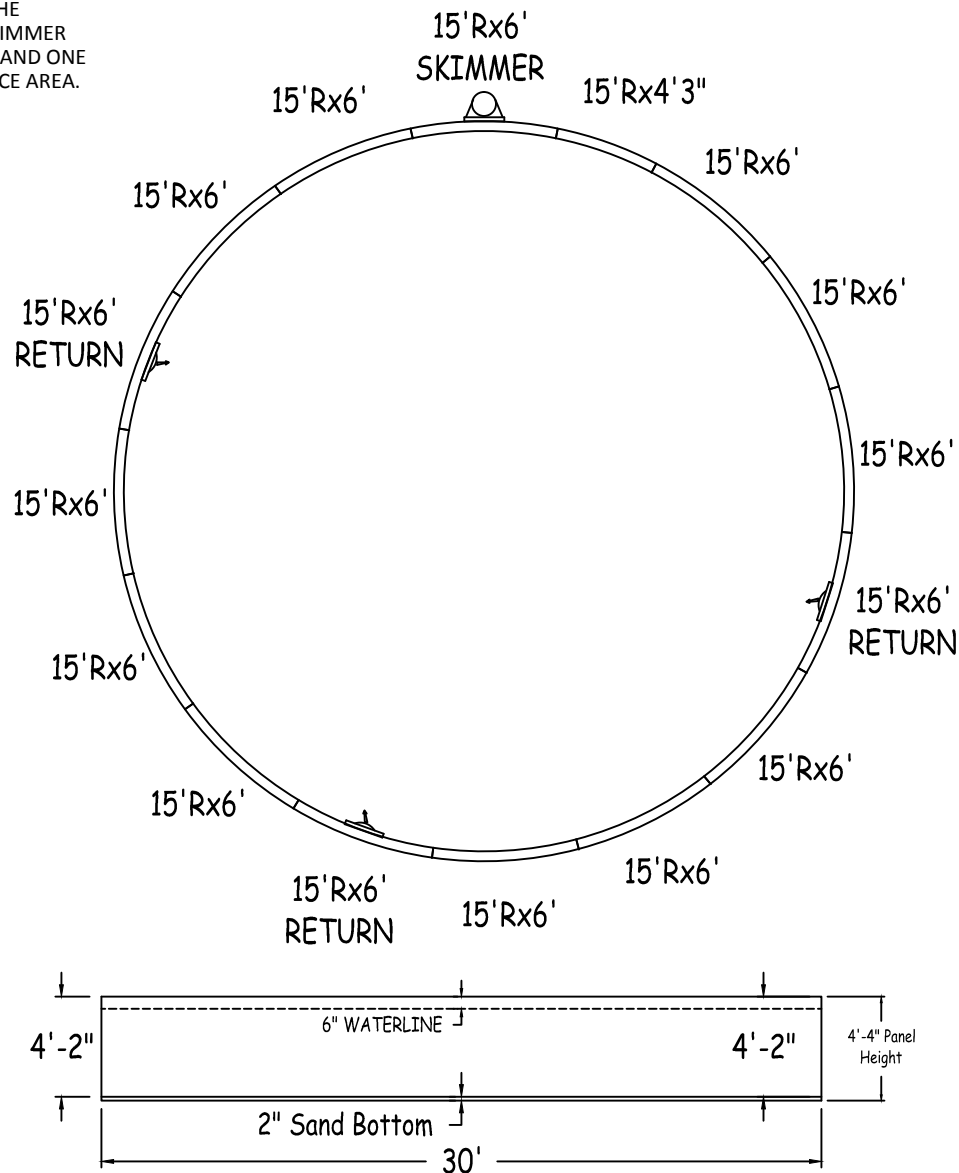
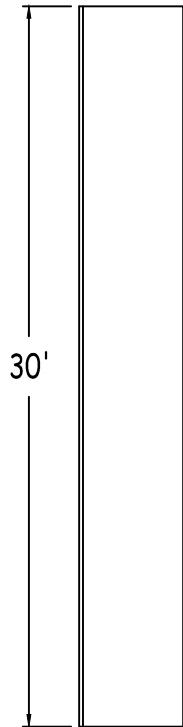
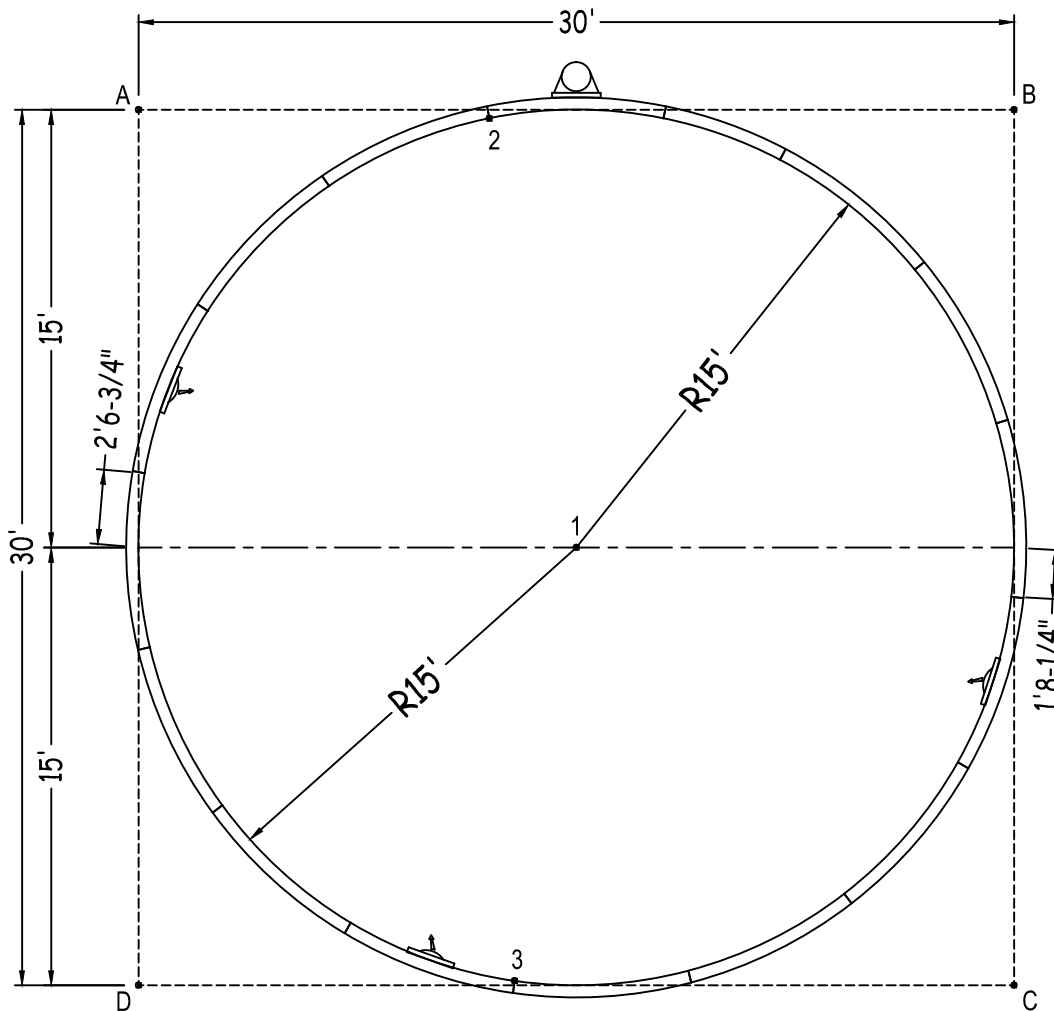


IN ACCORDANCE WITH ANSI/APSP/ICC-5 2011, THE
INSTALLER IS RESPONSIBLE FOR PLACING ONE SKIMMER
FOR EVERY 800 SQUARE FEET OF SURFACE AREA AND ONE
RETURN FOR EVERY 300 SQUARE FEET OF SURFACE AREA.



Bartop OG Pool System		ROUND 30-0 X 30-0			NON-DIVING POOL USE OF DIVING EQUIPMENT IS PROHIBITED	WARNING! FOR WARRANTY AND SAFETY PURPOSES: Compression straps required (NOTE: 4 straps per panel, both sides of panel) Bolts must be used at every bolt hole location.
52" STEEL PANELS	PERIMETER: 94'-3"	VOLUME (US Gal): 19400				
DWG#:	SURFACE (ft²): 707	VOLUME (Liters): 73400				
B5ROFBS3030-16	LINER (ft²): 706	DATE: 1/1/2016	DSR: 151			
KIT#:	COVER (ft²): 1024	SCALE: 1/8" = 1'-0"		MEETS DEPTH AND SHAPE MINIMUM STANDARD ANSI/APSP/ICC-5 2011		
ROUND				SHEET: 1 OF 2		

Diagonals	
2 To 3	29'-6 3/4"



		Base	Option 1
Part number	Description	QTY	QTY
RA0721800X	15'Rx6'	11	9
RA0721800*	15'Rx6' SKIMMER	1	1
RA0721800*	15'Rx6' RETURN	3	3
RA0511800X	15'Rx4'3"	1	1
RA0481800X	15'Rx4'	-	1
RA0121800S	15'Rx1' STEP	-	2
RA072102SC	6'0"X4" STEP CONNECTOR	-	1
Brace	Brace	-	2
IPC-BT52WCS-2	COMPRESSION STRAP 2PC	32	34
IPC-DRVSTK-12G	BRACE COMP D-STK 3"X24" 90D 12G	-	2
IPC-STKPK25	REBAR STAKE 18" 25PC	1	1
IPC-HDWSTRT150	BOLT STR 3/8-16X1" C/W NUT 150PC	2	2
STP69X4P	ACRYLIC STEP FRENCH CURVE 6' (48")	-	1
CYW-RA096180-1	BT WHT, 8' 0" X 15' 0" RADIUS 1PC	11	0
CYW-RA075180-1	BT WHT, 6' 3" X 15' 0" RADIUS 1PC	1	0
CYW-CLIP-1	BT COPING, CLIP	14	0
COP-TSPK100	SCREW PACK, TEK#10 X 3/4 (100 X1)	1	0
CYW-INSRT00PFT	BT COPING, WC TRK COVER PER FT	100	0

	A	B	C	D
1	21'-2 1/2"	21'-2 1/2"	21'-2 1/2"	21'-2 1/2"
2	12'- 1/4"	17'-11 3/4"	34'-8 3/4"	32'- 1/2"
3	32'-6 1/4"	34'-5"	17'-1 1/2"	12'-10 1/2"
A	-	30'-0"	42'-5"	30'-0"