

SPA / UTILITY STEPS

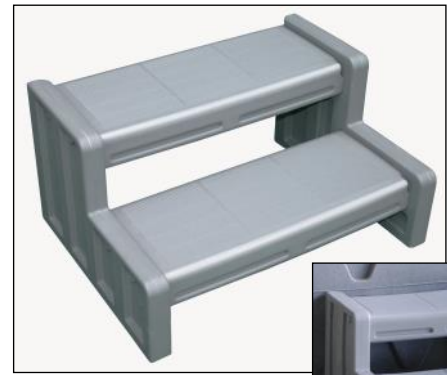
MODELS: JSS & DSS

IMPORTANT INSTRUCTIONS: Read all instructions carefully & completely to become familiar with parts, assembly, safety and proper use of this product. Failure to follow these instructions may result in serious personal injury. **DO NOT DEVIATE FROM THESE INSTRUCTIONS**

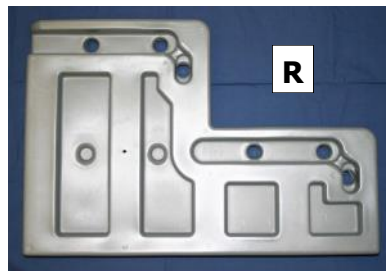
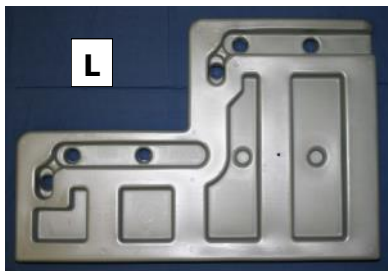
TOOLS REQUIRED: Rubber mallet or hammer and wooden block

SAFETY INSTRUCTIONS & PROPER USE

- These spa / utility step systems have a 300 lb load capacity
- These steps are designed for use by one person at all times
- The steps are designed and intended for use on flat surfaces only (flat bottom)
- Never jump from steps
- The steps conform to the latest revisions of the APSP & ANSI recommended standards for spa / hot tub steps (when properly assembled & installed as per manufacturer's recommendations)
- Assemble and install this step system as per the manufacturer's instructions. Do not deviate from these instructions as serious personal injury or drowning may occur - **PLEASE ALWAYS USE SAFELY & RESPONSIBLY !**
- Please review all instructions for proper use and safety with all individuals using these steps to prevent injury
- Make certain all parts are free of defects before assembling. If defects present contact manufacture immediately for replacement parts



Step 1: IDENTIFY PARTS



Step 2: FOLD TREADS



Step 2: FIT TREADS INTO STRINGERS & SECURE

