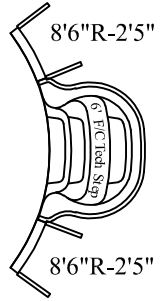
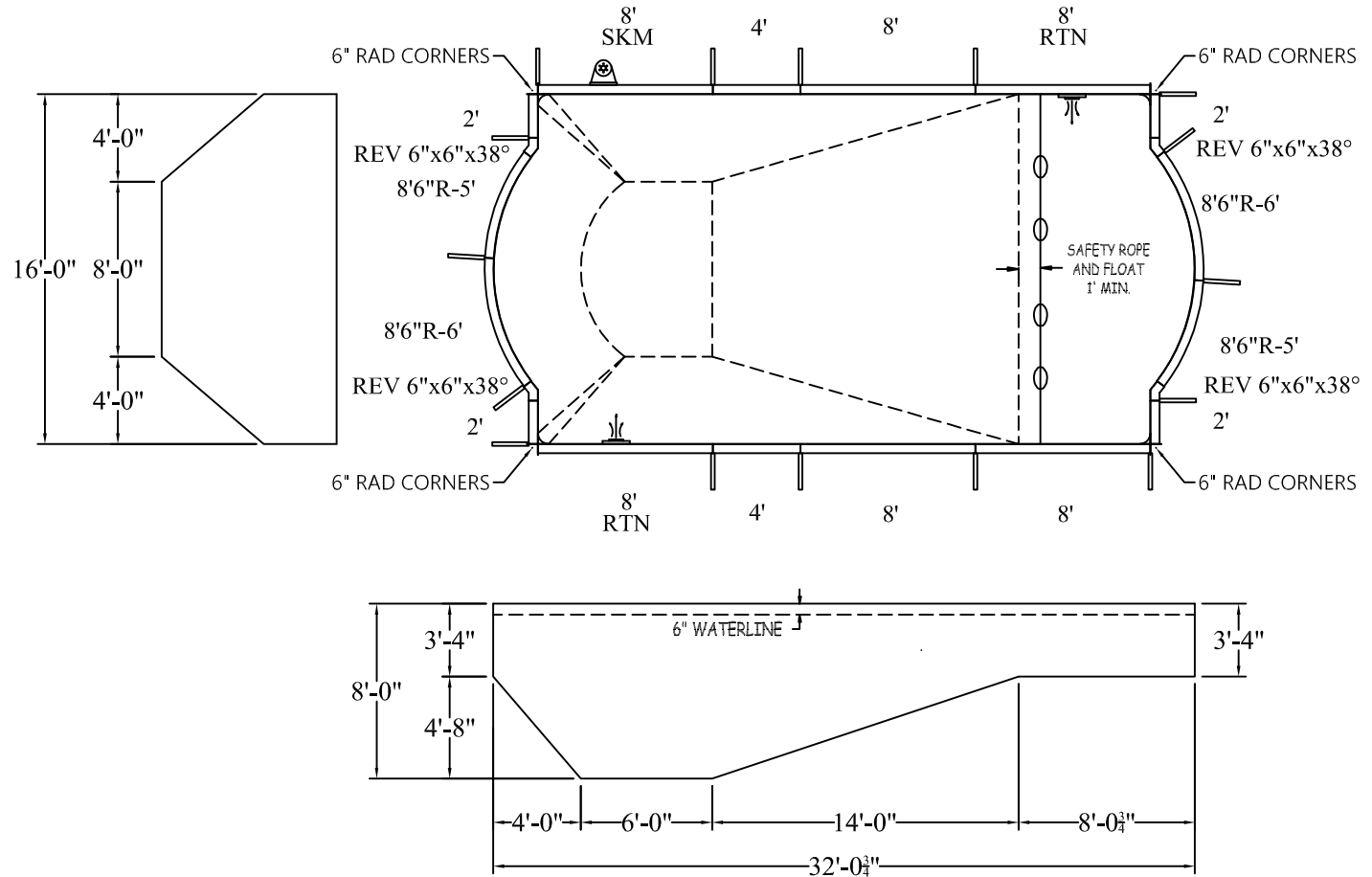
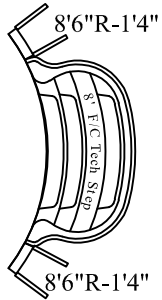


# STEP OPTIONS

## STEP OPTION 1



## STEP OPTION 2



ROMAN 6 IN RAD

16-0 X 32-1

DATE: 01/01/2019

REVISION:

SCALE: N.T.S.

APPROX. WATER VOLUME: 59 400 LITRES

PERIMETER: 90'-0" LIN.FT.

SURFACE (ft<sup>2</sup>): 478.6568

LINER (ft<sup>2</sup>): 512.9984

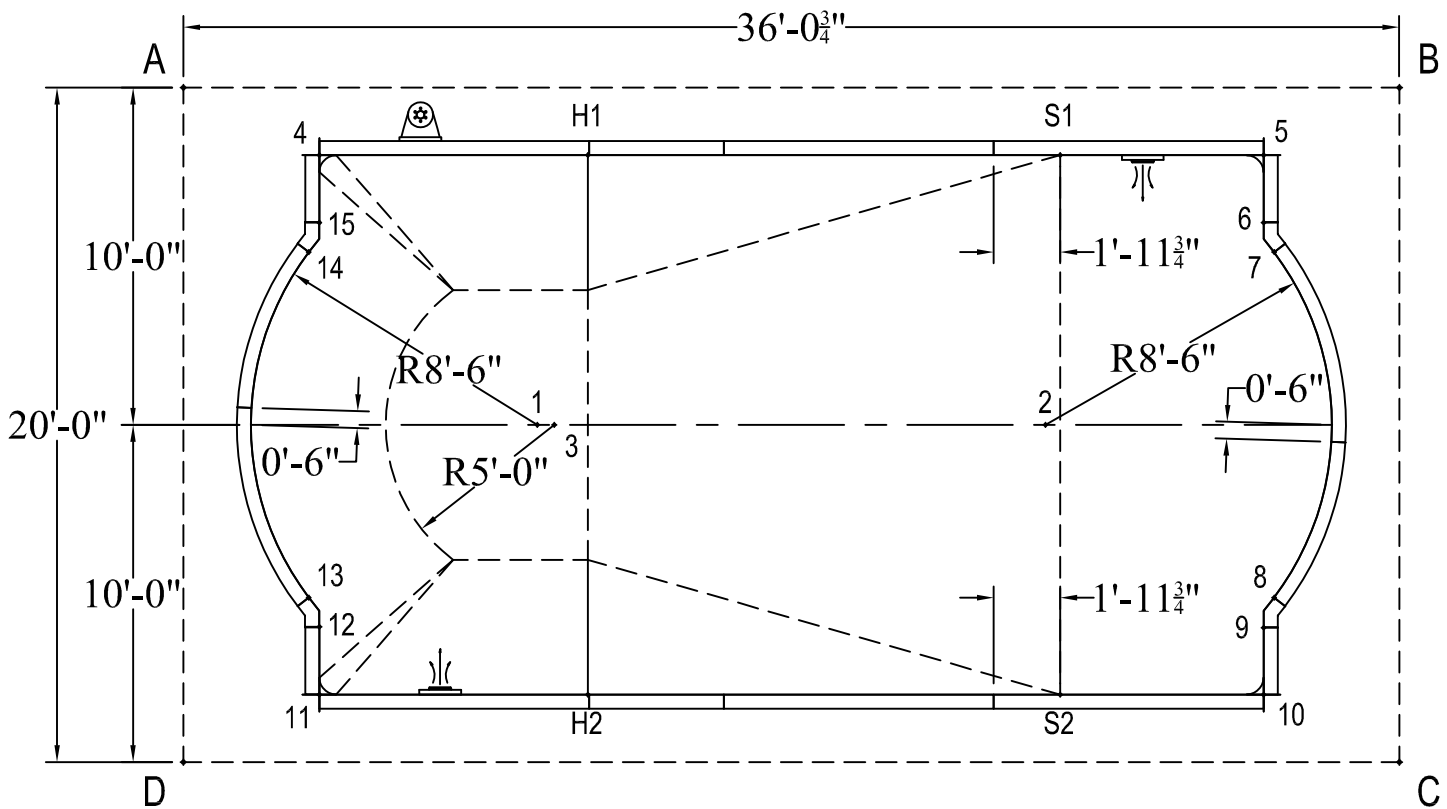
COVER (ft<sup>2</sup>): 613.4940 Standard

# ATLAS SERIES

### WARNING

SWIMMING POOLS ARE DANGEROUS WHEN USED IMPROPERLY. CONSULT YOUR DEALER FOR INFORMATION ON THE SAFE USE OF SWIMMING POOLS. IT IS THE RESPONSIBILITY OF TOWN OFFICIALS, BUILDERS AND HOME OWNERS TO FOLLOW ALL SAFETY RECOMMENDATIONS OF LOCAL ORDINANCES AND EQUIPMENT MANUFACTURERS FOR DIVING & SLIDING EQUIPMENT REFER TO THE MANUFACTURER'S INSTRUCTIONS TO CORRECTLY POSITION & INSTALL EQUIPMENT.

	A	B	C	D						DIAGONALS					
1	14'-6"	27'-5 1/2"	27'-5 1/2"	14'-6"	11	18'-5 1/4"	36'-9"	32'-1"	4'-6"	1 to 2	15'-0 3/4"	2 to 3	14'-6 3/4"	6 to 10	14'-0"
2	27'-5 1/2"	14'-6"	14'-6"	27'-5 1/2"	12	16'-6"	35'-9 1/2"	32'-3 1/4"	5'-8 1/4"	1 to 3	0'-6"	2 to 4	22'-11 3/4"	6 to 11	31'-3 3/4"
3	14'-10 1/2"	26'-11 3/4"	26'-11 3/4"	14'-10 1/2"	13	15'-7"	35'-8 1/2"	32'-8 1/2"	6'-1 1/2"	1 to 4	10'-3 1/2"	2 to 5	10'-3 1/2"	6 to 12	30'-5 1/2"
4	4'-6"	32'-1"	36'-9"	18'-5 1/4"	14	6'-1 1/2"	32'-8 1/2"	35'-8 1/2"	15'-7"	1 to 5	22'-11 3/4"	2 to 6	8'-10"	6 to 13	30'-5"
5	32'-1"	4'-6"	18'-5 1/4"	36'-9"	15	5'-8 1/4"	32'-3 1/4"	35'-9 3/4"	16'-6"	1 to 6	22'-4 1/4"	2 to 7	8'-6"	6 to 14	28'-4"
6	32'-3 1/4"	5'-8 1/4"	16'-6"	35'-9 3/4"	S1	26'-1"	10'-3"	20'-7 1/2"	31'-7 1/2"	1 to 7	22'-5 1/4"	2 to 8	8'-6"	6 to 15	28'-0"
7	32'-8 1/2"	6'-1 1/2"	15'-7"	35'-8 1/2"	S2	31'-7 1/2"	20'-7 1/2"	10'-3"	26'-1"	1 to 8	22'-5 1/4"	2 to 9	8'-10"	7 to 8	10'-3"
8	35'-8 1/2"	15'-7"	6'-1 1/2"	32'-8 1/2"	H1	12'-2"	24'-1 3/4"	30'-0 1/2"	21'-7 1/2"	1 to 9	22'-4 1/4"	2 to 10	10'-3 1/2"	7 to 9	11'-1 1/2"
9	35'-9 3/4"	16'-6"	5'-8 1/4"	32'-3 1/4"	H2	21'-7 1/2"	30'-0 1/2"	24'-1 3/4"	12'-2"	1 to 10	22'-11 3/4"	2 to 11	22'-11 3/4"	7 to 10	13'-1 1/2"
10	36'-9"	18'-5 1/4"	4'-6"	32'-1"	A	-	36'-0 3/4"	41'-2 3/4"	20'-0"	1 to 11	10'-3 1/2"	2 to 12	22'-4 1/4"	7 to 11	31'-2 1/2"
										1 to 12	8'-9 3/4"	2 to 13	22'-5 1/4"	7 to 12	30'-5"
										1 to 13	8'-6"	2 to 14	22'-5 1/4"	7 to 13	30'-4 3/4"
										1 to 14	8'-6"	2 to 15	22'-4 1/4"	7 to 14	28'-7 1/2"



3 to 4	10'-7 1/4"	7 to 15	28'-4"
3 to 5	22'-6"	8 to 9	0'-11 1/4"
3 to 6	21'-10 1/2"	8 to 10	2'-10 3/4"
3 to 7	21'-11 1/2"	8 to 11	28'-5 1/2"
3 to 8	21'-11 1/2"	8 to 12	28'-3 3/4"
3 to 9	21'-10 1/2"	8 to 13	28'-7 1/2"
3 to 10	22'-6"	8 to 14	30'-4 3/4"
3 to 11	10'-7 1/4"	8 to 15	30'-5"
3 to 12	9'-2 1/4"	9 to 10	2'-0"
3 to 13	8'-10 3/4"	9 to 11	28'-0 3/4"
3 to 14	8'-10 3/4"	9 to 12	28'-0"
3 to 15	9'-2 1/4"	9 to 13	28'-4"
4 to 5	28'-0"	9 to 14	30'-5"
4 to 6	28'-0 3/4"	9 to 15	30'-5 1/2"
4 to 7	28'-5 1/2"	10 to 11	28'-0"
4 to 8	31'-2 1/2"	10 to 12	28'-0 3/4"
4 to 9	31'-3 3/4"	10 to 13	28'-5 1/2"
4 to 10	32'-3"	10 to 14	31'-2 1/2"
4 to 11	16'-0"	10 to 15	31'-3 3/4"
4 to 12	14'-0"	11 to 12	2'-0"
4 to 13	13'-1 1/2"	11 to 13	2'-10 3/4"
4 to 14	2'-10 3/4"	11 to 14	13'-1 1/2"
4 to 15	2'-0"	11 to 15	14'-0"
5 to 6	2'-0"	12 to 13	0'-11"
5 to 7	2'-10 3/4"	12 to 14	11'-1 1/2"
5 to 8	13'-1 1/2"	12 to 15	12'-0"
5 to 9	14'-0"	13 to 14	10'-3"
5 to 10	16'-0"	13 to 15	11'-1 1/2"
5 to 11	32'-3"	14 to 15	0'-11 1/4"
5 to 12	31'-3 1/2"	S1 to S2	16'-0"
5 to 13	31'-2 1/2"	S1 to H1	14'-0"
5 to 14	28'-5 1/2"	S1 to H2	21'-3"
5 to 15	28'-0 3/4"	S2 to H1	21'-3"
6 to 7	0'-11 1/4"	S2 to H2	14'-0"
6 to 8	11'-1 1/2"	H1 to H2	16'-0"

ROMAN 6 IN RAD

16-0 X 32-1

DATE:01/01/2019

ATLAS SERIES