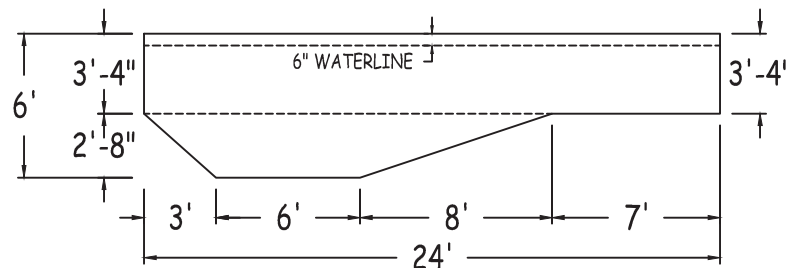
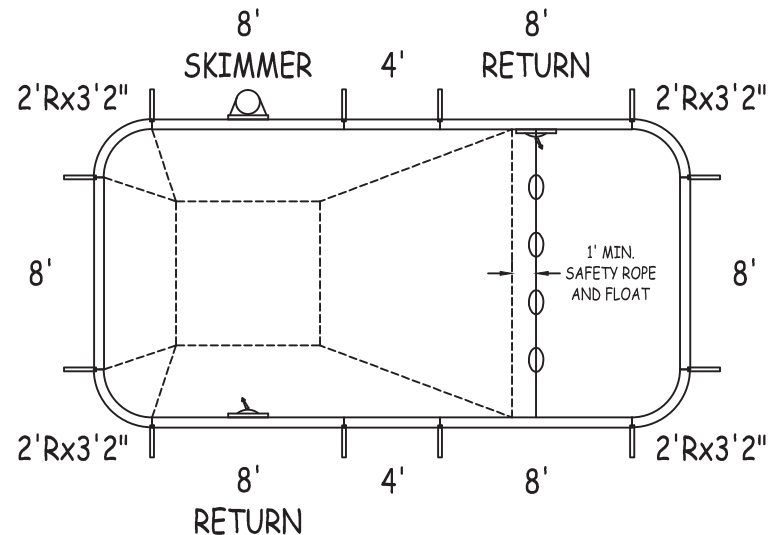
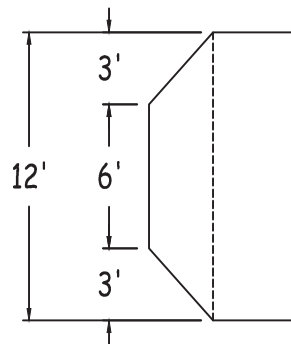


IN ACCORDANCE WITH ANSI/APSP/ICC-5 2011, THE  
INSTALLER IS RESPONSIBLE FOR PLACING ONE SKIMMER  
FOR EVERY 800 SQUARE FEET OF SURFACE AREA AND ONE  
RETURN FOR EVERY 300 SQUARE FEET OF SURFACE AREA.



LATHAM STEEL		RECTANGLE-2FT RAD 12-0 x 24-0			
42" STEEL PANELS		PERIMETER:	68'-8"	VOLUME (US Gal):	7900
DWG#:		SURFACE (ft²):	285	VOLUME (Liters):	29900
LSRE24S1224-15		LINER (ft²):	288	DATE:	1/1/2015
KIT#:		COVER (ft²):	364	DSR:	144
RE24S1224		SCALE:	1/8" = 1'-0"		

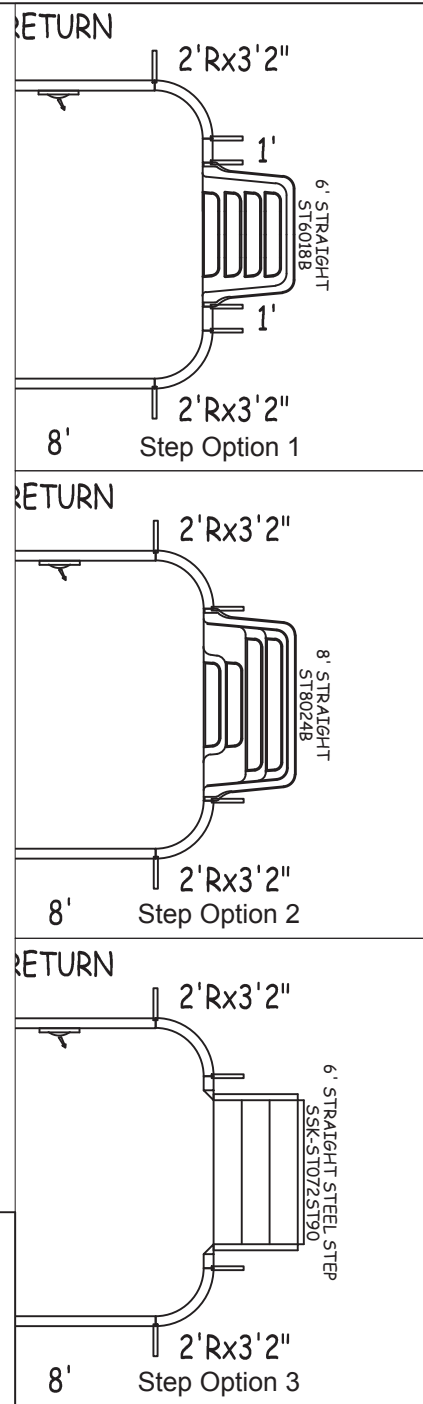
ALWAYS  
ENTER POOL

**Feet First**

**NON-DIVING POOL**

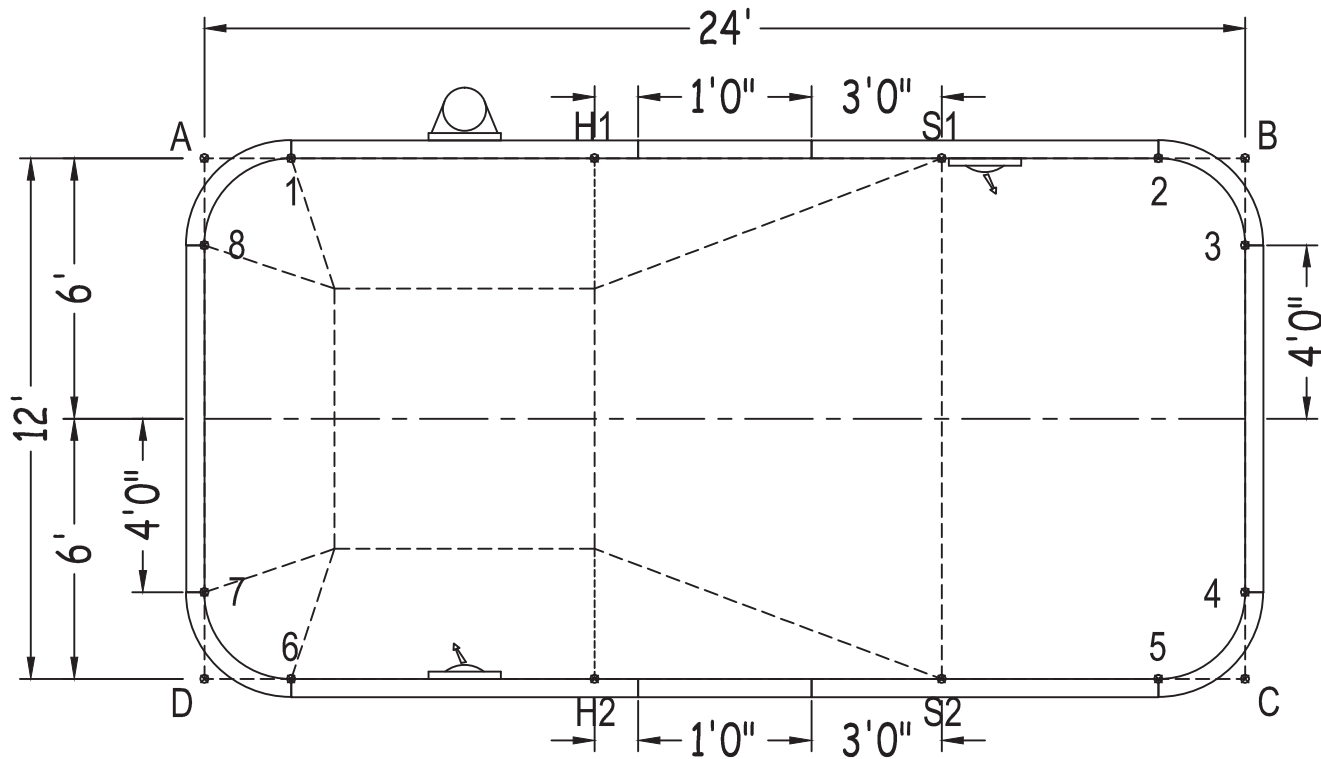
USE OF DIVING EQUIPMENT  
IS PROHIBITED

MEETS DEPTH AND SHAPE MINIMUM  
STANDARD ANSI/APSP/ICC-5 2011



Diagonals		2 to 7	24'-2"
S1toS2	12'-0"	2 to 8	22'-1"
H1toH2	12'-0"	3 to 4	8'-0"
S1toH1	8'-0"	3 to 5	10'-2 1/2"
S2toH2	8'-0"	3 to 6	24'-2"
S1toH2	14'-5"	3 to 7	25'-3 1/2"
H1toS2	14'-5"	3 to 8	24'-0"
1 to 2	20'-0"	4 to 5	2'-10"
1 to 3	22'-1"	4 to 6	22'-1"
1 to 4	24'-2"	4 to 7	24'-0"
1 to 5	23'-4"	4 to 8	25'-3 1/2"
1 to 6	12'-0"	5 to 6	20'-0"
1 to 7	10'-2 1/2"	5 to 7	22'-1"
1 to 8	2'-10"	5 to 8	24'-2"
2 to 3	2'-10"	6 to 7	2'-10"
2 to 4	10'-2 1/2"	6 to 8	10'-2 1/2"
2 to 5	12'-0"	7 to 8	8'-0"
2 to 6	23'-4"		

Part number	Description	Base	Option 1	Option 2	Option 3
		QTY	QTY	QTY	QTY
ST0960002X	8'	3	2	2	2
ST0960002*	8' SKIMMER	1	1	1	1
ST0960002*	8' RETURN	2	2	2	2
ST0480001X	4'	2	2	2	2
ST0120000X	1'	-	2	-	-
CN0380241X	2'Rx3'2"	4	4	4	4
SSC-TRST1207	12" Straight Transition	-	-	-	2
Brace	Brace	12	14	12	12
IPC-STKPK25	REBAR STAKE 18" 25PC	1	2	1	2
IPC-HDWSTRT150	BOLT STR 3/8-16X1" C/W NUT 150PC	1	2	1	2
ST6018B	THKSHT STEP STR 6'	-	1	-	-
ST8024B	THKSHT STEP STR SIT N STEP 8'	-	-	1	-
SSK-ST072ST90	STEEL STEP STR-90D 3 TRD 6'	-	-	-	1



	A	B	C	D
1	2'-0"	22'-0"	25'- 3/4"	12'-2"
2	22'-0"	2'-0"	12'-2"	25'- 3/4"
3	24'-1"	2'-0"	10'-0"	26'-0"
4	26'-0"	10'-0"	2'-0"	24'-1"
5	25'- 3/4"	12'-2"	2'-0"	22'-0"
6	12'-2"	25'- 3/4"	22'-0"	2'-0"
7	10'-0"	26'-0"	24'-1"	2'-0"
8	2'-0"	24'-1"	26'-0"	10'-0"
S2	20'-9 3/4"	13'-10 3/4"	7'-0"	17'-0"
S1	17'-0"	7'-0"	13'-10 3/4"	20'-9 3/4"
H2	15'-0"	19'-2 1/2"	15'-0"	9'-0"
H1	9'-0"	15'-0"	19'-2 1/2"	15'-0"
A	-	24'-0"	26'-10"	12'-0"