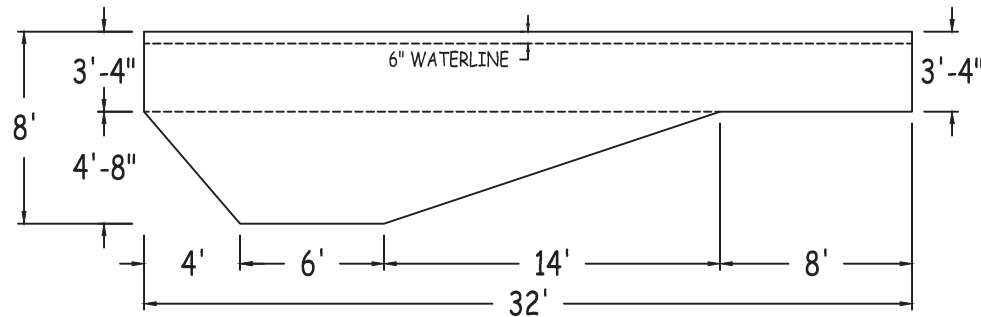
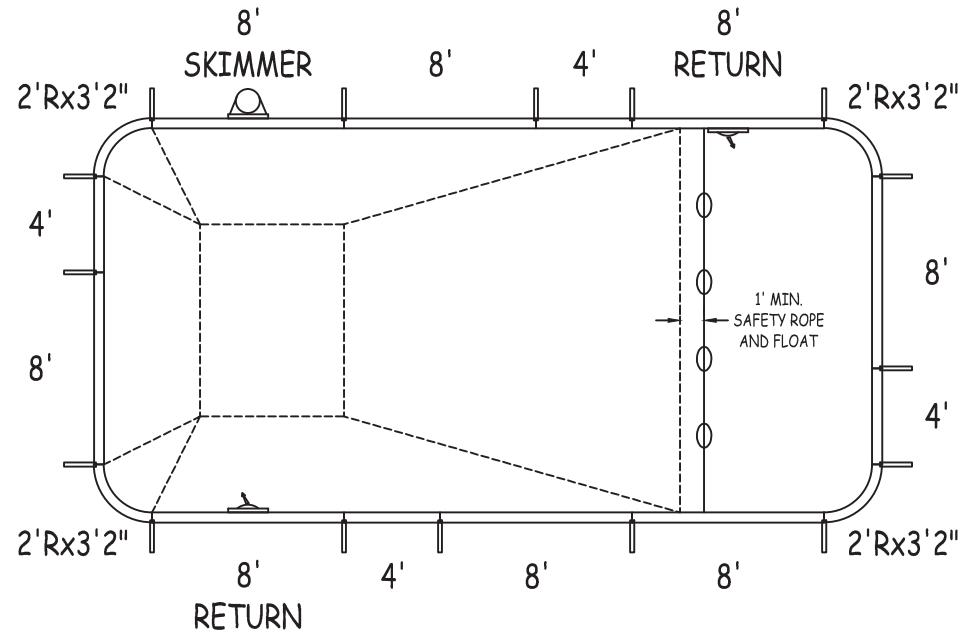
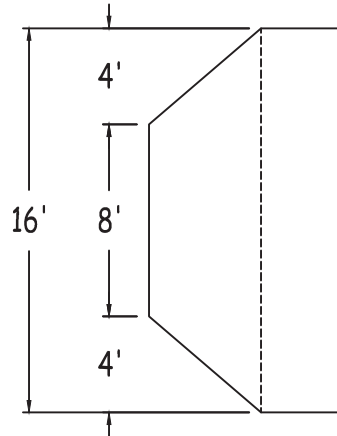


IN ACCORDANCE WITH ANSI/APSP/ICC-5 2011, THE INSTALLER IS RESPONSIBLE FOR PLACING ONE SKIMMER FOR EVERY 800 SQUARE FEET OF SURFACE AREA AND ONE RETURN FOR EVERY 300 SQUARE FEET OF SURFACE AREA.



CERT# ESR-2782

LATHAM STEEL

RECTANGLE-2FT RAD 16-0 x 32-0

42" STEEL PANELS

PERIMETER: 92'-8" VOLUME (US Gal): 16700

DWG#:

SURFACE (ft²): 509 VOLUME (Liters): 63200

LSRE24S1632-15

LINER (ft²): 512 DATE: 1/1/2015 DSR: 144

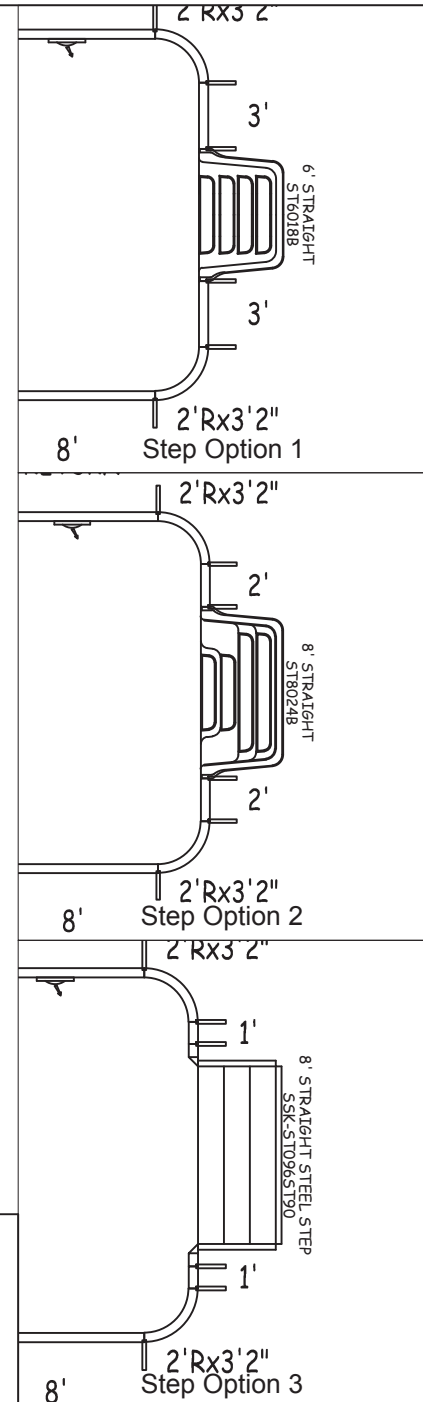
KIT#:

RE24S1632 COVER (ft²): 612 SCALE: 1/8" = 1'-0"



DIVING/SLIDING EQUIPMENT SHALL BE DESIGNED FOR SWIMMING POOLS AND SHALL BE INSTALLED IN ACCORDANCE WITH THE DIVING/SLIDING EQUIPMENT MANUFACTURER'S SPECIFICATIONS. PLEASE CONTACT THE DIVING/SLIDING EQUIPMENT MANUFACTURER FOR THEIR SPECIFICATIONS.

MEETS DEPTH AND SHAPE MINIMUM
STANDARD ANSI/APSP/ICC-5 2011

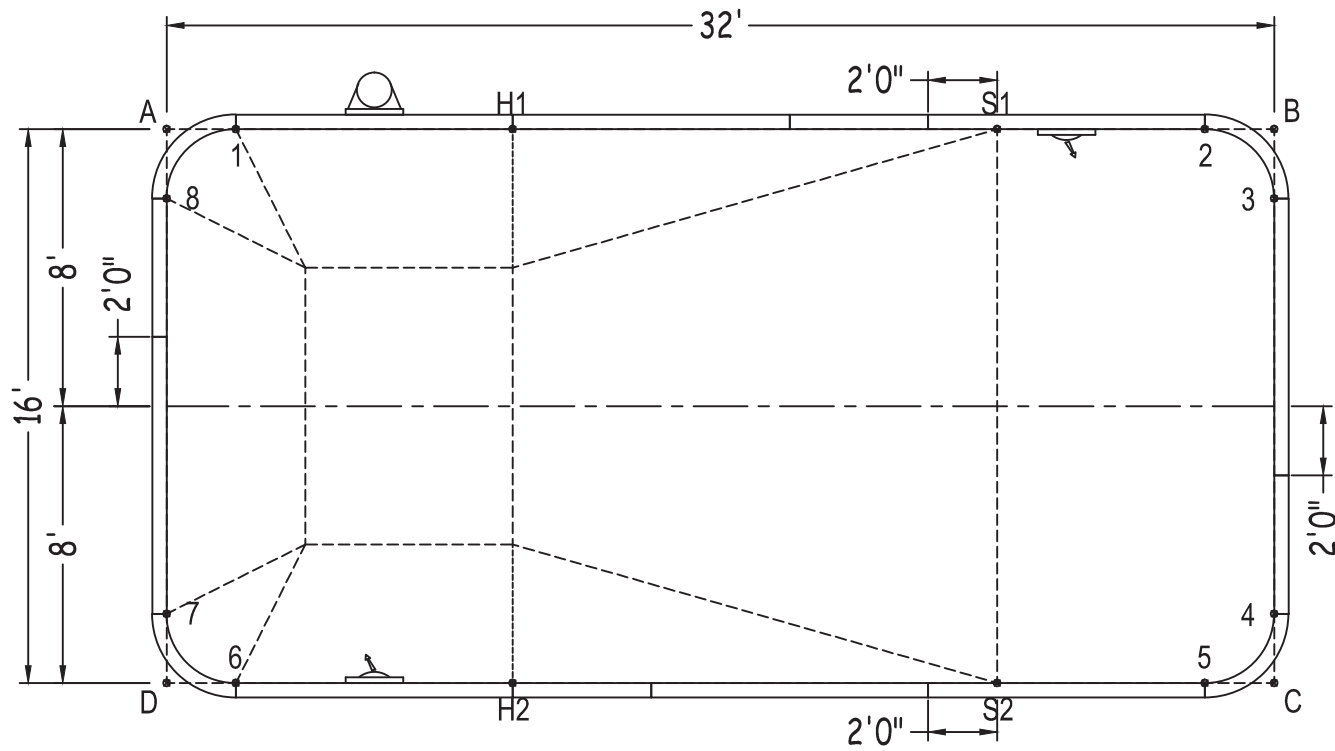


RECTANGLE-2FT RAD

SHEET: 1 OF 2

Diagonals		2 to 7	33'-1 1/4"
S1toS2	16'-0"	2 to 8	30'- 3/4"
H1toH2	16'-0"	3 to 4	12'-0"
S1toH1	14'-0"	3 to 5	14'-1 3/4"
S2toH2	14'-0"	3 to 6	33'-1 1/4"
S1toH2	21'-3"	3 to 7	34'-2"
H1toS2	21'-3"	3 to 8	32'-0"
1 to 2	28'-0"	4 to 5	2'-10"
1 to 3	30'- 3/4"	4 to 6	30'- 3/4"
1 to 4	33'-1 1/4"	4 to 7	32'-0"
1 to 5	32'-3"	4 to 8	34'-2"
1 to 6	16'-0"	5 to 6	28'-0"
1 to 7	14'-1 3/4"	5 to 7	30'- 3/4"
1 to 8	2'-10"	5 to 8	33'-1 1/4"
2 to 3	2'-10"	6 to 7	2'-10"
2 to 4	14'-1 3/4"	6 to 8	14'-1 3/4"
2 to 5	16'-0"	7 to 8	12'-0"
2 to 6	32'-3"		

		Base	Option 1	Option 2	Option 3
Part number	Description	QTY	QTY	QTY	QTY
ST0960002X	8'	5	4	4	4
ST0960002*	8' SKIMMER	1	1	1	1
ST0960002*	8' RETURN	2	2	2	2
ST0480001X	4'	4	3	3	3
ST0360000X	3'	-	2	-	-
ST0240000X	2'	-	-	2	-
ST0120000X	1'	-	-	-	2
CN0380241X	2'Rx3'2"	4	4	4	4
SSC-TRST1207	12" Straight Transition	-	-	-	2
Brace	Brace	16	17	17	17
IPC-STKPK25	REBAR STAKE 18" 25PC	2	2	2	2
IPC-HDWSTRT150	BOLT STR 3/8-16X1" C/W NUT 150PC	2	2	2	2
ST6018B	THKSHT STEP STR 6'	-	1	-	-
ST8024B	THKSHT STEP STR SIT N STEP 8'	-	-	1	-
SSK-ST096ST90	STEEL STEP STR-90D 3 TRD 8'	-	-	-	1



	A	B	C	D
1	2'-0"	30'-0"	34'-0"	16'-1 1/2"
2	30'-0"	2'-0"	16'-1 1/2"	34'-0"
3	32'- 3/4"	2'-0"	14'-0"	34'-11 1/4"
4	34'-11 1/4"	14'-0"	2'-0"	32'- 3/4"
5	34'-0"	16'-1 1/2"	2'-0"	30'-0"
6	16'-1 1/2"	34'-0"	30'-0"	2'-0"
7	14'-0"	34'-11 1/4"	32'- 3/4"	2'-0"
8	2'-0"	32'- 3/4"	34'-11 1/4"	14'-0"
S2	28'-10 1/4"	17'-10 3/4"	8'-0"	24'-0"
S1	24'-0"	8'-0"	17'-10 3/4"	28'-10 1/4"
H2	18'-10 1/2"	27'-2 1/2"	22'-0"	10'-0"
H1	10'-0"	22'-0"	27'-2 1/2"	18'-10 1/2"
A	-	32'-0"	35'-9 1/4"	16'-0"

RECTANGLE-2FT RAD 16-0 X 32-0

DWG #: LSRE24S1632-15

DATE: 1/1/2015

SHEET: 2 OF 2