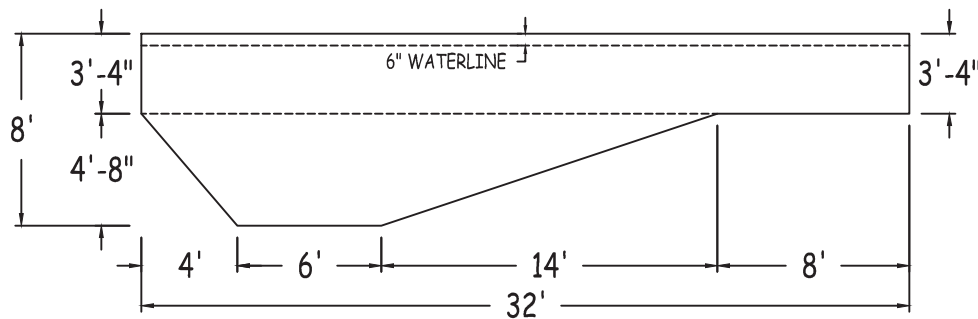
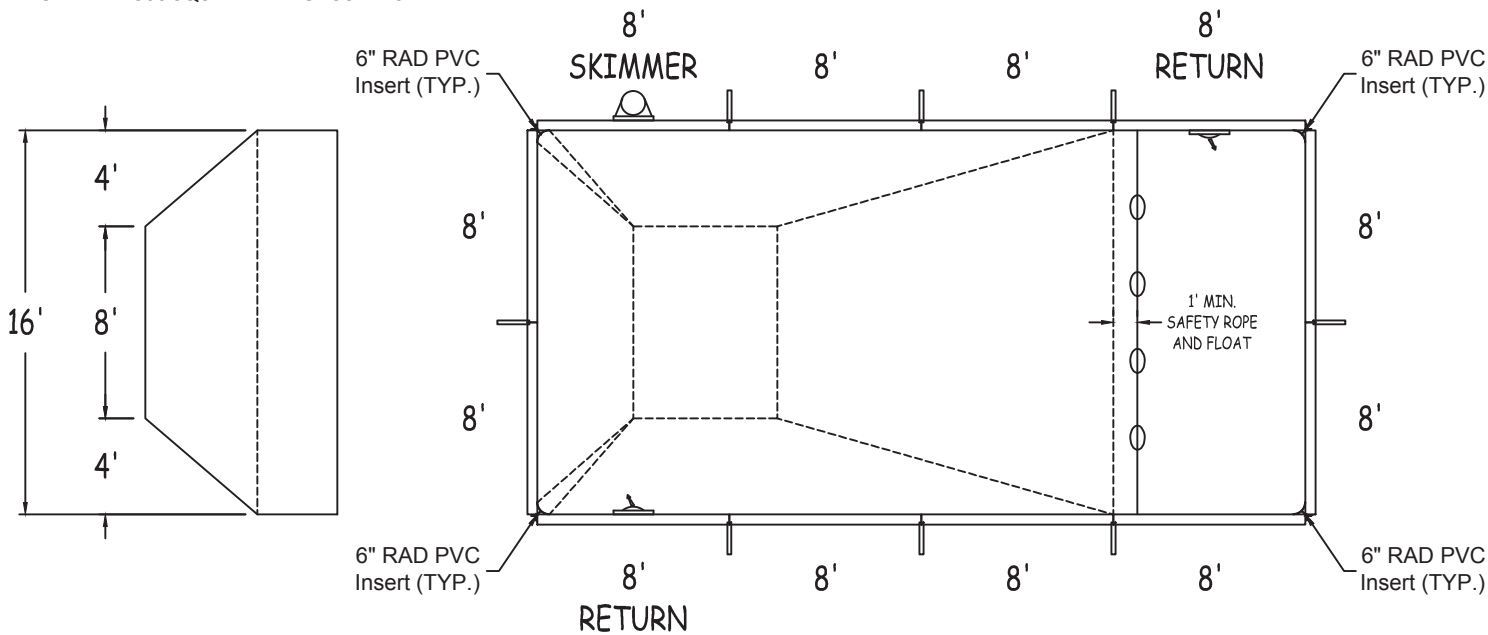


IN ACCORDANCE WITH ANSI/APSP/ICC-5 2011, THE INSTALLER IS RESPONSIBLE FOR PLACING ONE SKIMMER FOR EVERY 800 SQUARE FEET OF SURFACE AREA AND ONE RETURN FOR EVERY 300 SQUARE FEET OF SURFACE AREA.



LATHAM STEEL

RECTANGLE-6IN RAD 16-0 X 32-0

42" STEEL PANELS

PERIMETER: 96'-0" VOLUME (US Gal): 16800

DWG#: LSRE06S1632-15

SURFACE (ft²): 512 VOLUME (Liters): 63600

KIT#: RE06S1632

LINER (ft²): 512 DATE: 1/1/2015 DSR: 111

COVER (ft²): 612

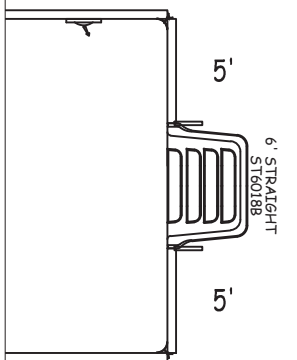
SCALE: 1/8" = 1'-0"



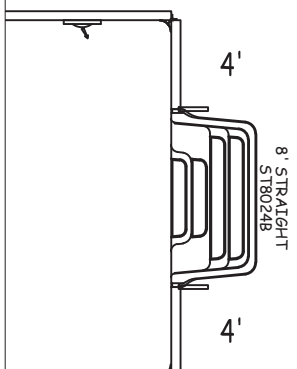
DIVING/SLIDING EQUIPMENT SHALL BE DESIGNED FOR SWIMMING POOLS AND SHALL BE INSTALLED IN ACCORDANCE WITH THE DIVING/SLIDING EQUIPMENT MANUFACTURER'S SPECIFICATIONS. PLEASE CONTACT THE DIVING/SLIDING EQUIPMENT MANUFACTURER FOR THEIR SPECIFICATIONS.

RECTANGLE-6IN RAD

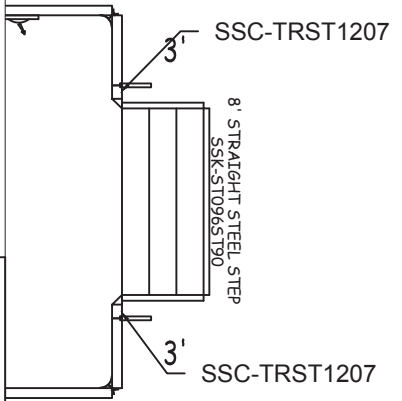
RETURN



Step Option 1



Step Option 2

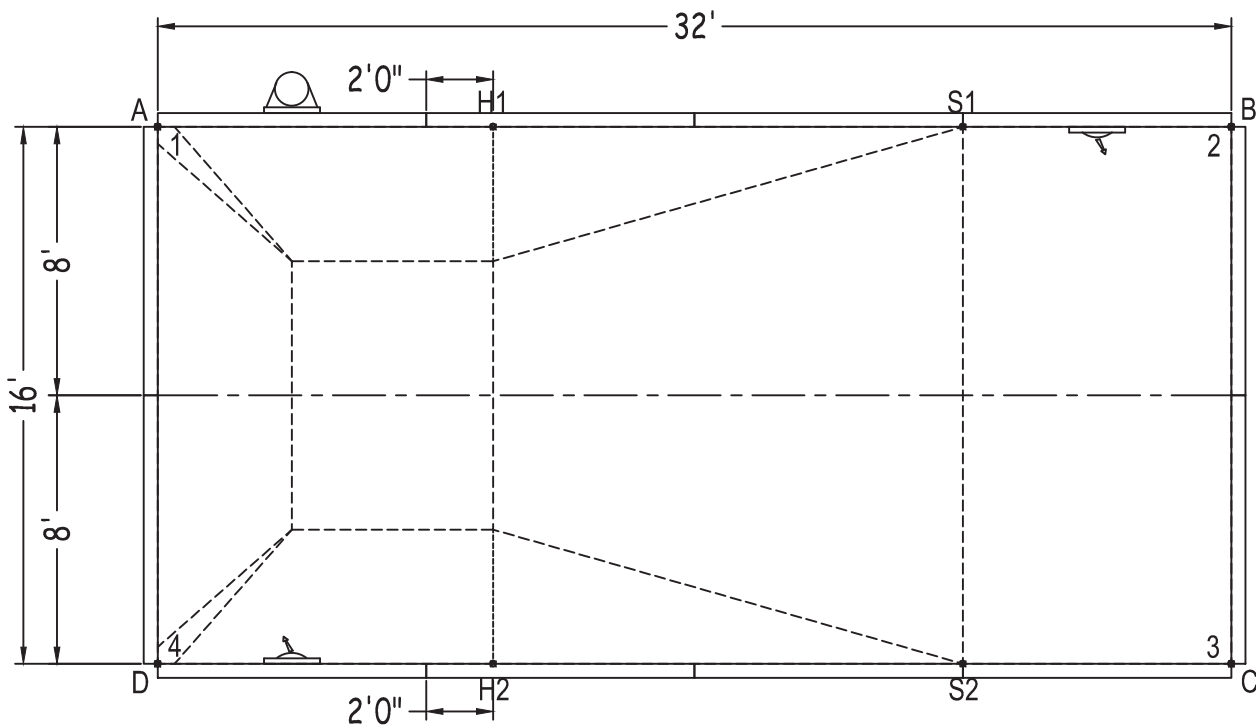


Step Option3

SHEET: 1 OF 2

Diagonals	
S1toS2	16'-0"
H1toH2	16'-0"
S1toH1	14'-0"
S2toH2	14'-0"
S1toH2	21'-3"
H1toS2	21'-3"
1 to 2	32'-0"
1 to 3	35'-9 1/4"
1 to 4	16'-0"
2 to 3	16'-0"
2 to 4	35'-9 1/4"
3 to 4	32'-0"

		Base	Option 1	Option 2	Option 3
Part number	Description	QTY	QTY	QTY	QTY
ST0960002X	8'	9	7	7	7
ST0960002*	8' SKIMMER	1	1	1	1
ST0960002*	8' RETURN	2	2	2	2
ST0600001X	5'	-	2	-	-
ST0480001X	4'	-	-	2	-
ST0360000X	3'	-	-	-	2
SSC-TRST1207	12" Straight Transition	-	-	-	2
Brace	Brace	8	9	9	9
IPC-AB90	CONNECTOR CNR ANGLE 90D 42"	4	4	4	4
IPC-AB90-INS6R	CORNER INSERT 6" RAD PVC 42"	4	4	4	4
IPC-STKPK25	REBAR STAKE 18" 25PC	1	1	1	1
IPC-HDWSTRT150	BOLT STR 3/8-16X1" C/W NUT 150PC	1	1	1	2
ST6018B	THKSHT STEP STR 6'	-	1	-	-
ST8024B	THKSHT STEP STR SIT N STEP 8'	-	-	1	-
SSK-ST096ST90	STEEL STEP STR-90D 3 TRD 8'	-	-	-	1



	A	B	C	D
1	0"	32'-0"	35'-9 1/4"	16'-0"
2	32'-0"	0"	16'-0"	35'-9 1/4"
3	35'-9 1/4"	16'-0"	0"	32'-0"
4	16'-0"	35'-9 1/4"	32'-0"	0"
S2	28'-10 1/4"	17'-10 3/4"	8'-0"	24'-0"
S1	24'-0"	8'-0"	17'-10 3/4"	28'-10 1/4"
H2	18'-10 1/2"	27'-2 1/2"	22'-0"	10'-0"
H1	10'-0"	22'-0"	27'-2 1/2"	18'-10 1/2"
A	-	32'-0"	35'-9 1/4"	16'-0"

RECTANGLE-6IN RAD 16-0 X 32-0

DWG #:	LSRE06S1632-15
--------	----------------

DATE: 1/1/2015
----------------

SHEET:	2 OF 2
--------	--------