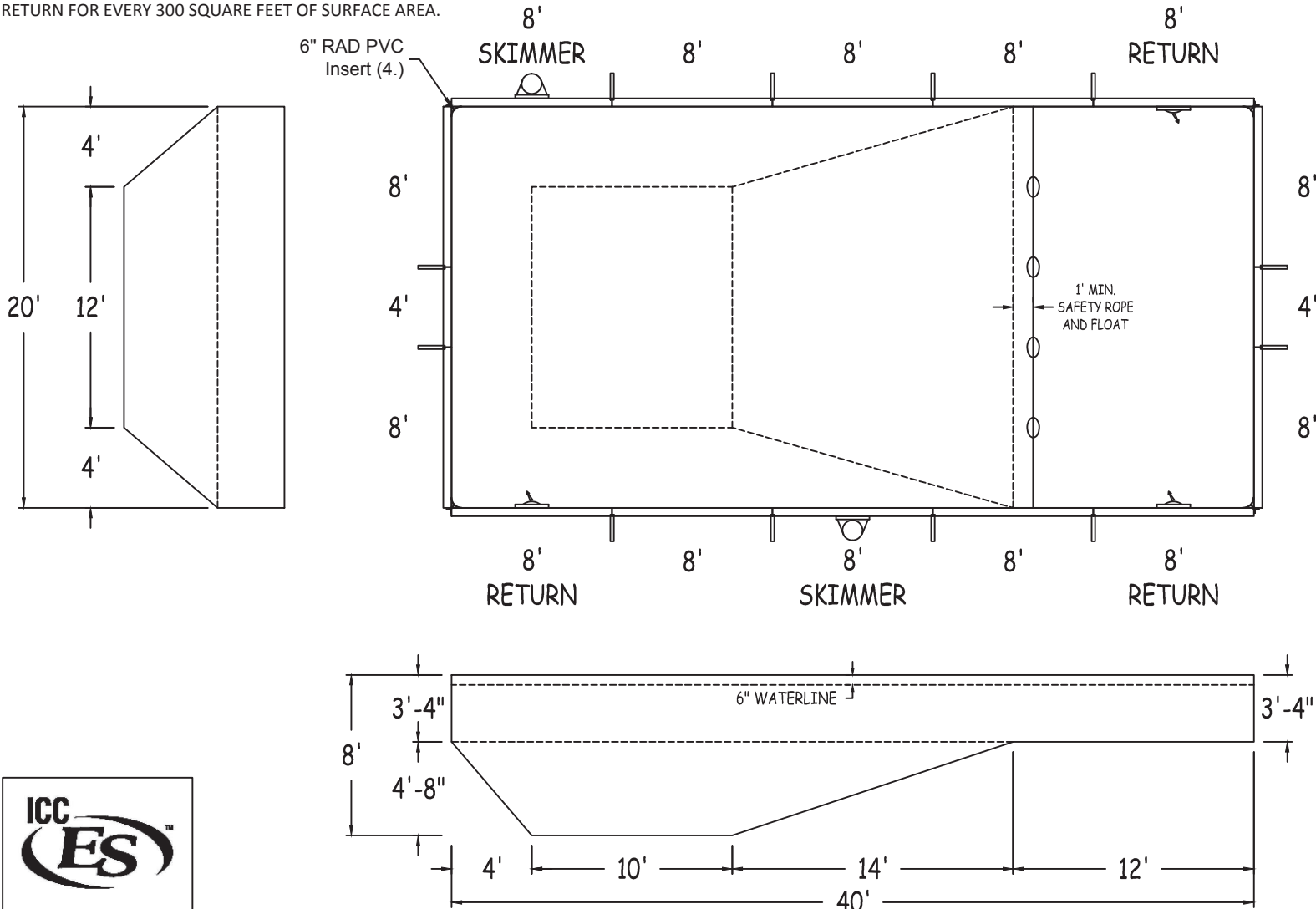


IN ACCORDANCE WITH ANSI/APSP/ICC-5 2011, THE INSTALLER IS RESPONSIBLE FOR PLACING ONE SKIMMER FOR EVERY 800 SQUARE FEET OF SURFACE AREA AND ONE RETURN FOR EVERY 300 SQUARE FEET OF SURFACE AREA.



LATHAM STEEL

RECTANGLE-6IN RAD 20-0 X 40-0

42" STEEL PANELS

PERIMETER: 120'-0" VOLUME (US Gal): 26300

DWG#:

SURFACE (ft²): 800 VOLUME (Liters): 99500

LSRE06S2040-15

LINER (ft²): 800 DATE: 1/1/2015 DSR: 111

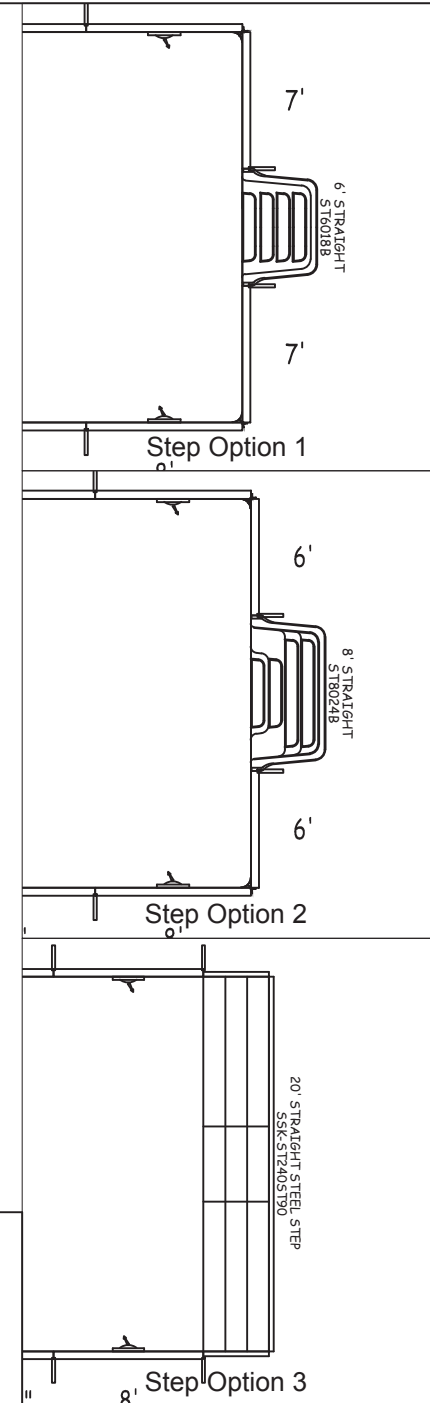
KIT#:

RE06S2040 COVER (ft²): 924 SCALE: 1/8" = 1'-0"



DIVING/SLIDING EQUIPMENT SHALL BE DESIGNED FOR SWIMMING POOLS AND SHALL BE INSTALLED IN ACCORDANCE WITH THE DIVING/SLIDING EQUIPMENT MANUFACTURER'S SPECIFICATIONS. PLEASE CONTACT THE DIVING/SLIDING EQUIPMENT MANUFACTURER FOR THEIR SPECIFICATIONS.

MEETS DEPTH AND SHAPE MINIMUM STANDARD ANSI/APSP/ICC-5 2011

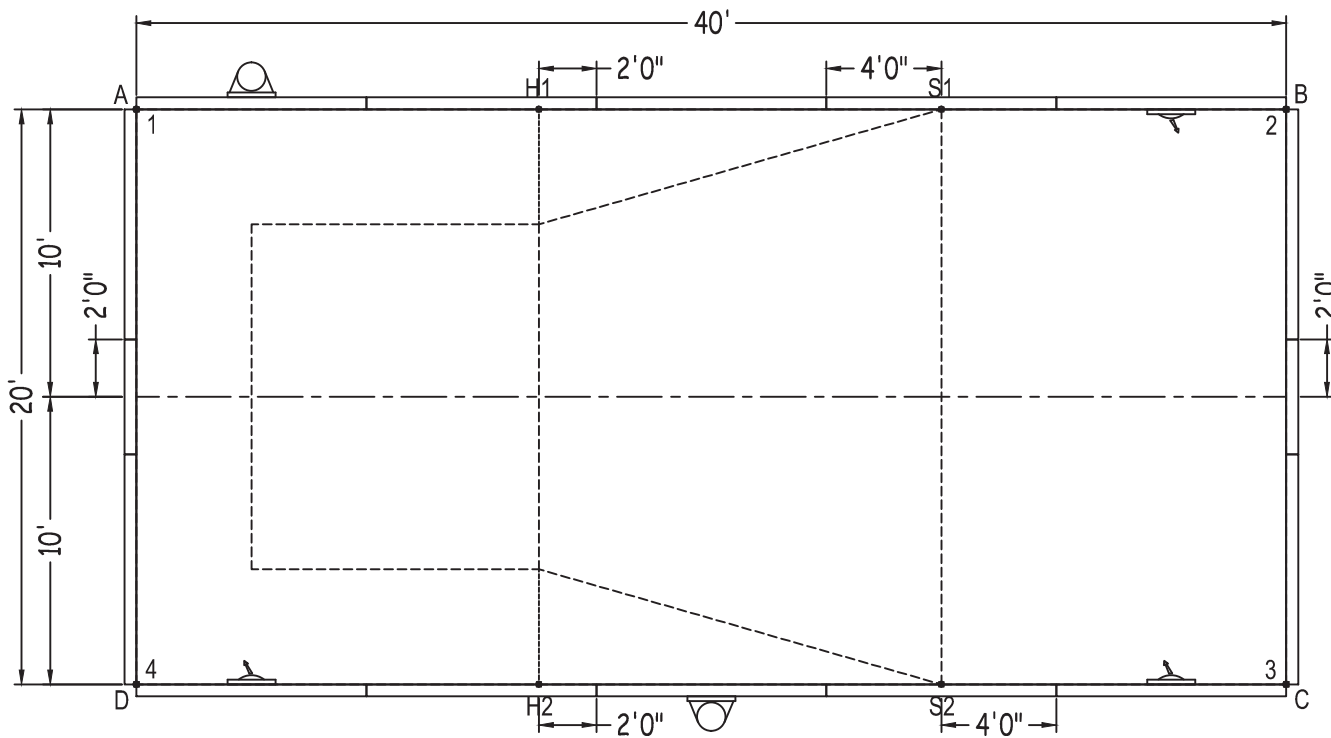


RECTANGLE-6IN RAD

SHEET: 1 OF 2

Diagonals	
S1ToS2	20'-0"
H1TdH2	20'-0"
S1TdH1	14'-0"
S2TdH2	14'-0"
S1TdH2	24'-5"
H1ToS2	24'-5"
1 To 2	40'-0"
1 To 3	44'-8 3/4"
1 To 4	20'-0"
2 To 3	20'-0"
2 To 4	44'-8 3/4"
3 To 4	40'-0"

		Base	Option 1	Option 2	Option 3
Part number	Description	QTY	QTY	QTY	QTY
ST0960002X	8'	9	7	7	5
ST0960002*	8' SKIMMER	2	2	2	2
ST0960002*	8' RETURN	3	3	3	3
ST0840002X	7'	-	2	-	-
ST0720001X	6'	-	-	2	-
ST0540001X	4'6"	-	-	-	2
ST0480001X	4'	2	1	1	1
Brace	Brace	12	12	12	13
IPC-AB90	CONNECTOR CNR ANGLE 90D 42"	4	4	4	2
IPC-AB90-INS6R	CORNER INSERT 6" RAD PVC 42"	4	4	4	2
IPC-STKPK25	REBAR STAKE 18" 25PC	2	2	2	2
IPC-HDWSTRT150	BOLT STR 3/8-16X1" C/W NUT 150PC	2	2	2	2
ST6018B	THKSHT STEP STR 6'	-	1	-	-
ST8024B	THKSHT STEP STR SIT N STEP 8'	-	-	1	-
SSK-ST240ST90	FE STEEL STEP STR-90D 3 TRD 20'	-	-	-	1



	A	B	C	D
1	0"	40'-0"	44'-8 3/4"	20'-0"
2	40'-0"	0"	20'-0"	44'-8 3/4"
3	44'-8 3/4"	20'-0"	0"	40'-0"
4	20'-0"	44'-8 3/4"	40'-0"	0"
S2	34'-5"	23'-4"	12'-0"	28'-0"
S1	28'-0"	12'-0"	23'-4"	34'-5"
H2	24'-5"	32'-9 3/4"	26'-0"	14'-0"
H1	14'-0"	26'-0"	32'-9 3/4"	24'-5"
A	-	40'-0"	44'-8 3/4"	20'-0"

RECTANGLE-6IN RAD 20-0 X 40-0

DWG #:	LSRE06S2040-15
--------	----------------

DATE: 1/1/2015

SHEET:	2 OF 2
--------	--------